

August 2025

Si desea más información acerca  
este proyecto en español, por  
favor llame al 402.554.6666



## WATER INFRASTRUCTURE REPLACEMENT

This project may require the replacement of your water service line and meter to your home or business, all at no cost to you.

### PROJECT TIMELINE

1

#### LOCATE UTILITIES

A technician from M.U.D. will be marking utilities with flags and/or paint. For the safety of everyone, please do not remove these flags or markings.

2

#### DIG EXCAVATIONS

Excavations of various sizes will be dug to expose services in front of homes and businesses and on the corner lots to assist with installing the new main and making final connections. The corner lot excavations will be large and remain until final connections are made at the end of the project and the old main has been taken out of service.

3

#### INSTALL NEW WATER MAIN

The crew plans to bore (install) the main underground and under driveways. If necessary, driveways, sidewalks, lawns, and landscaping may be impacted and will be restored.

4

#### RECONNECT SERVICES

Homes and businesses will be reconnected to the new main. This will include a temporary water service interruption. You will be notified in advance of any planned service interruption.

5

#### ABANDON OLD MAIN AND TAKE OUT OF SERVICE

After water main installation and service reconnection work is completed, the old water main will be abandoned and taken out of service. This will include another temporary water service interruption. You will be notified in advance of any planned interruption.

6

#### RESTORATION

Restore lawns, landscaping, sidewalks, driveways, and streets at the end of the project and/or as weather permits.

### WHY

- Investing in your neighborhood by replacing the water mains in your area.
- Part of M.U.D.'s Infrastructure Replacement Program.

### WHEN AND HOW LONG

Work will begin August 2025. Project duration is several months, barring any unplanned delays.

### TRAFFIC

Possible lane restrictions may exist. Parking on the street may be restricted. For the safety of everyone, please slow down when driving in the area.

### TO PREPARE FOR A WATER SERVICE INTERRUPTION

To continue using a tank-style toilet, fill a container with water and have a bucket nearby to scoop water into the toilet tank and fill about halfway **for each flush**. A bathtub works great for this.

### AFTER A WATER SERVICE INTERRUPTION

It is normal to experience air in the water lines following a water service interruption. To clear the air, please run your cold water tap for approximately 10 minutes. This will help restore normal water flow.

### IMPORTANT TO NOTE



Hydrants are typically located within easements or the public Right of Way (ROW) and may be relocated to accommodate the new main location and to ensure compliance with all fire codes and regulations.

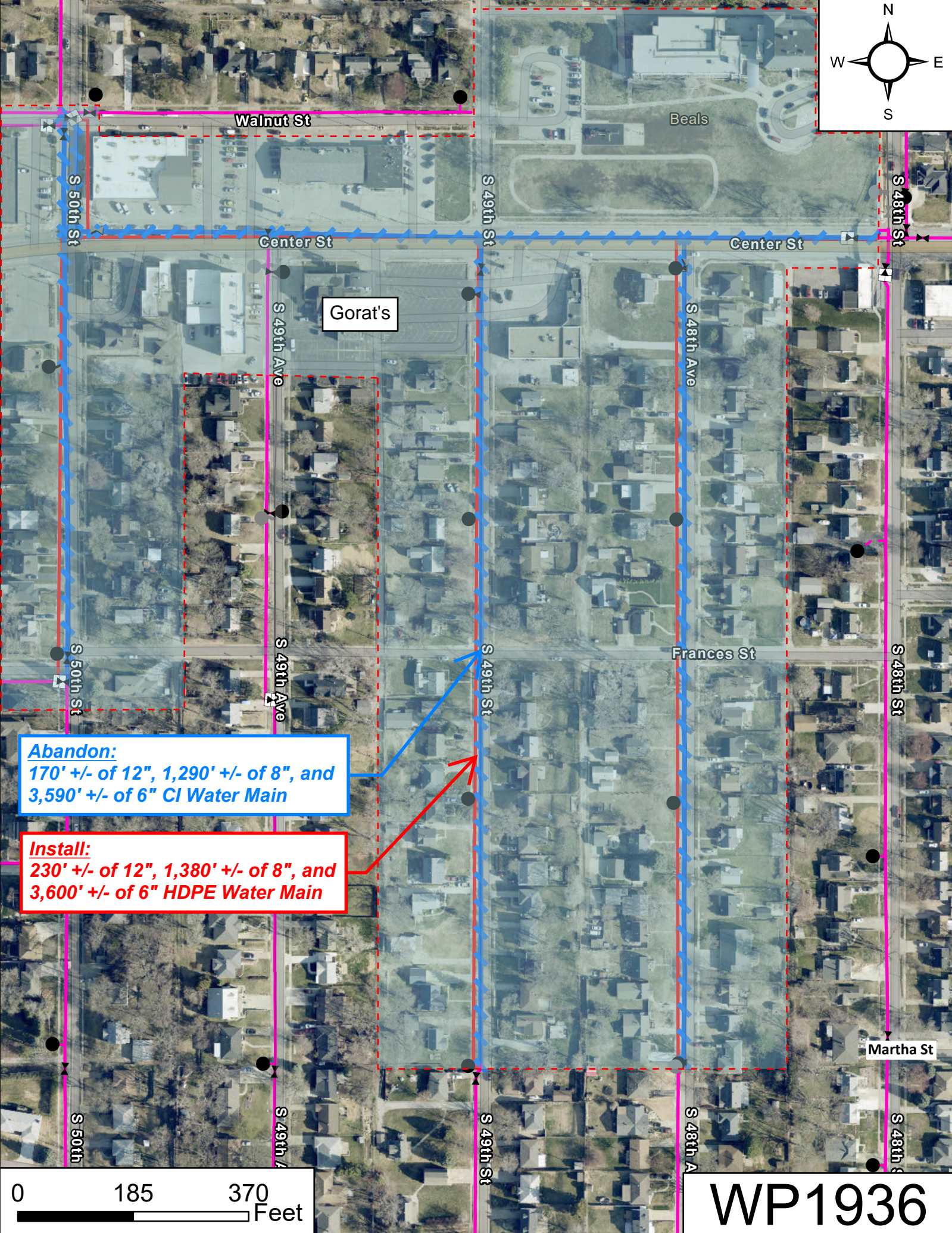
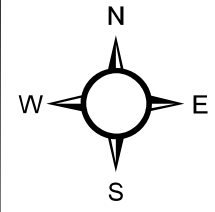


If you have a physical disability and are concerned about accessibility to your home or business during this project, please contact us.

Scan to watch a video on what to  
expect during an infrastructure  
replacement project.

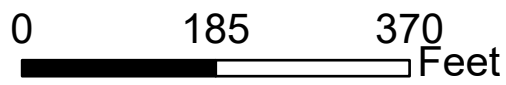






**Abandon:**  
170' +/- of 12", 1,290' +/- of 8", and  
3,590' +/- of 6" CI Water Main

**Install:**  
230' +/- of 12", 1,380' +/- of 8", and  
3,600' +/- of 6" HDPE Water Main



WP1936