

METROPOLITAN
UTILITIES DISTRICT

TEMPORARY **ROAD CLOSURE**



S 36th St

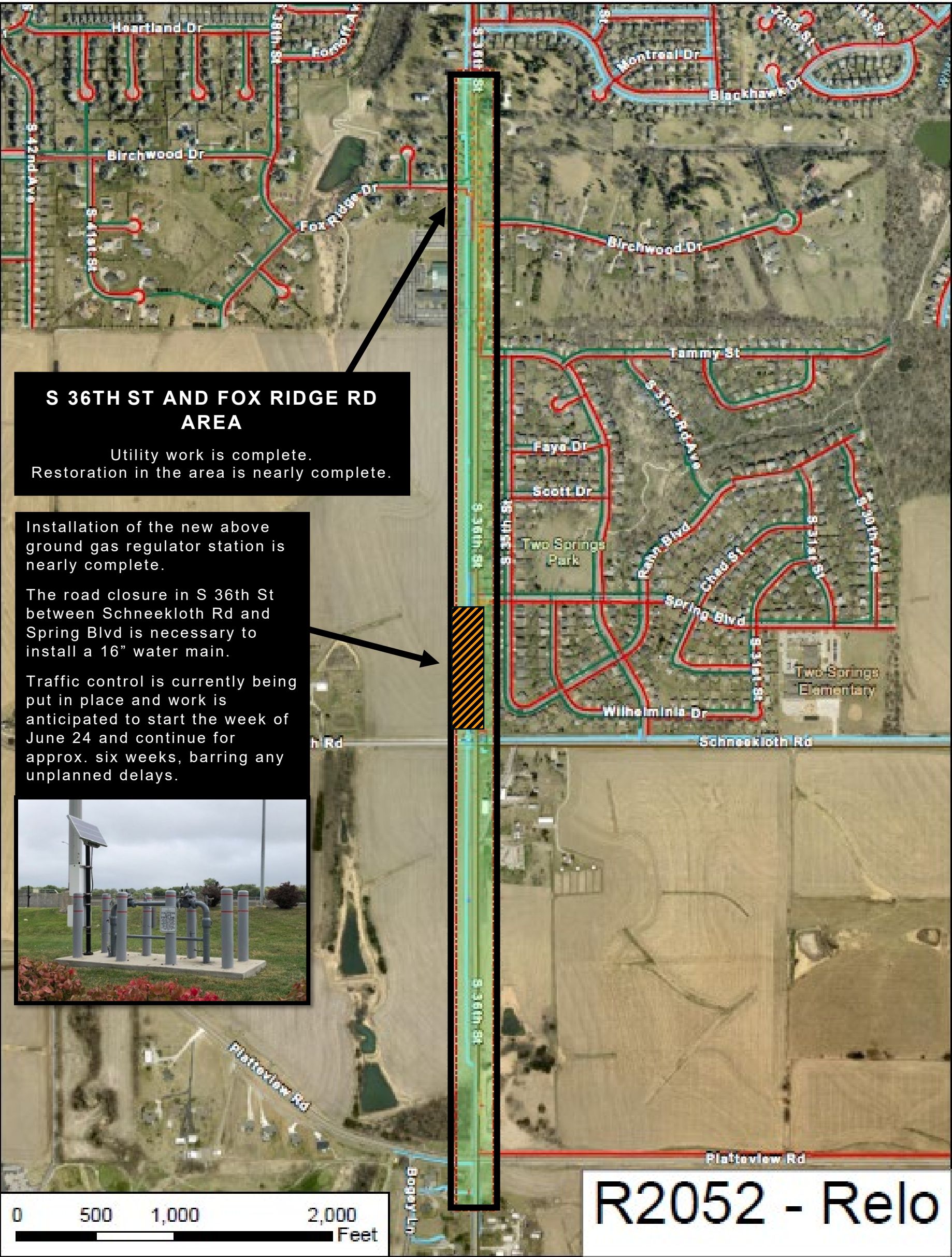
north of Schneekloth Rd to Spring Blvd

METROPOLITAN
UTILITIES DISTRICT



METROPOLITAN
UTILITIES DISTRICT

Update 06/17/2024

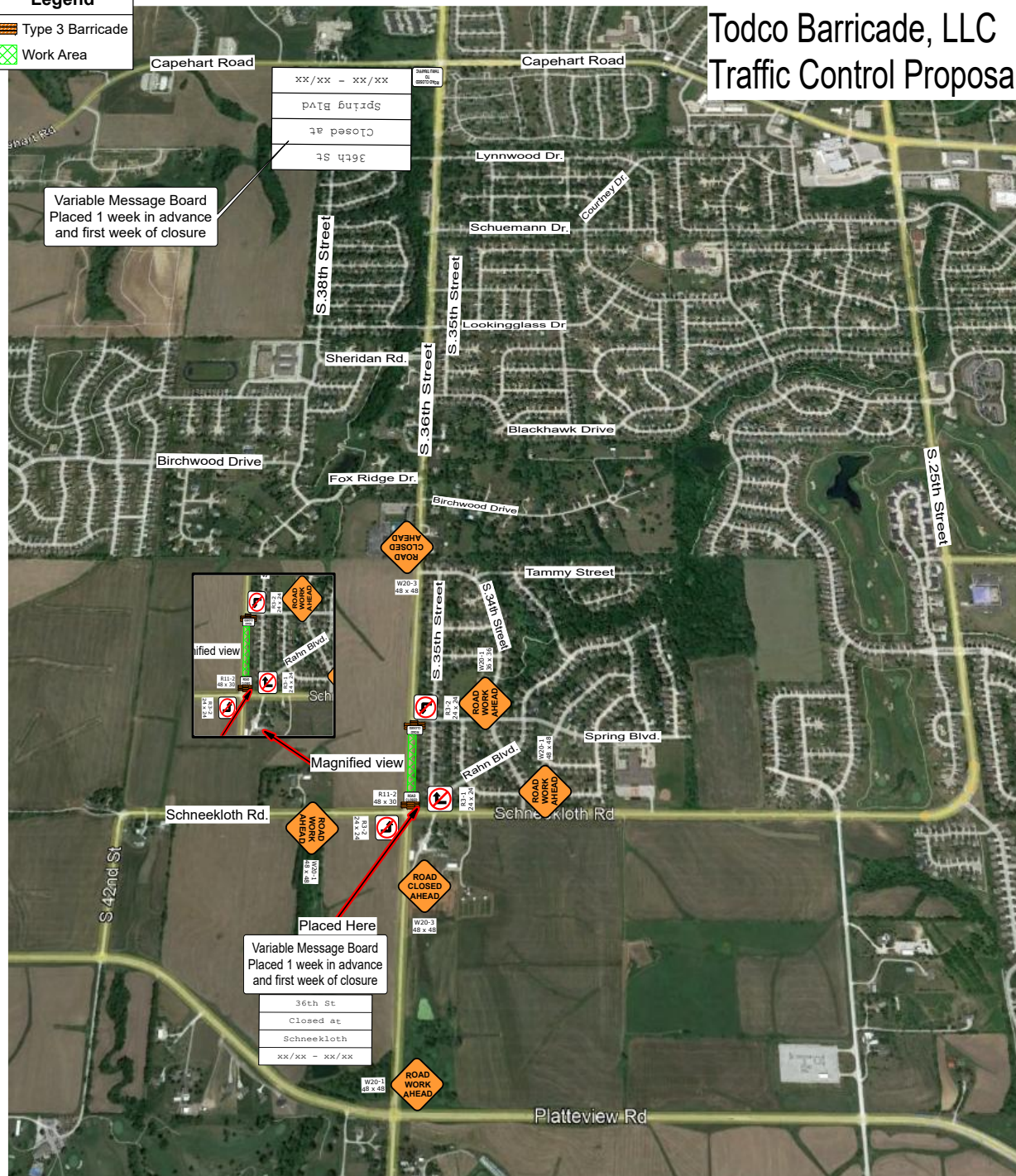
M.U.D. must relocate the gas and water mains in this area ahead of the City's S 36th Street Road Improvement Project.



Legend

-  Type 3 Barricade
-  Work Area

Todco Barricade, LLC Traffic Control Proposal



Date: 6/11/2024 Project: 36th Street - Schneekloth to Spring Blvd Closure

Comments:

This plan not to scale. This TTCP is for the protection of work area needed for the water main connection on S. 36th Street between Schneekloth and Spring Blvd. No turns will be allowed off of Platteview Road to proceed North on 36th Street. Variable message boards to be placed 1 week in advance of closure and the first week of the actual closure. This traffic control to remain in place for approximately 1 month. All devices and device spacings shall meet MUTCD and Sarpy County Nebraska minimum standards.

MUD Project # R2052 - 100054001051



Date: 06/11/2024 Author: Dave Jobeun Project: 36th Street Closure Schneekloth to Spring Blvd

Comments:

Proposal by Dave Jobeun
Dave Jobeun, ATSSA Certified Traffic Control Design Specialist

Approved by _____
Sarpy County Traffic Engineering

Contractor shall ensure this proposal is reviewed and approved by owner's engineer. This TCP is not valid until signed and approved by the authorized State/County/City/or any governing agency. By ordering sign/barcode services, contractor represents that such review and approval has been made and that Todco LLC may proceed with the work, including any final plans as amended by owner or its engineer.

August 2023

**Si desea más información
acerca este proyecto en
español, por favor llame al
402.554.6666**



GAS AND WATER INFRASTRUCTURE RELOCATION

This project may require the replacement of your gas and/or water service line and meters to your home or business, all at no cost to you.

WHY

Relocating gas and water mains ahead of the City of Bellevue Road Improvement Project MAPA 3773 / CN22288. For more information on the City's project, please visit: <https://www.bellevue36thstreet.com/>.

WHEN AND HOW LONG

Work will begin very soon however we are not able to give a specific start date due to unplanned delays such as weather, equipment, current projects, or emergencies. This project will continue into 2024.

WHAT YOU MAY EXPERIENCE

- Installation of new water and gas mains.
- Excavation pits of various sizes and piles of dirt – some may remain during the entire project.
- Trucks and equipment, gas and water pipe, safety fence and barricades.
- Streets, sidewalks, lawns and landscaping may be affected; however, all will be restored at the end of the project and as weather permits.

TRAFFIC AND PARKING

- Possible lane restrictions.
- Residents will be able to get in and out of their properties.
- Parking on the street is not recommended and may be restricted during the project due to the work.
- For the safety of you and our crews, please slow down when driving in the area.

RECONNECTION WORK

After the new gas and water mains are installed, service reconnection work from the homes or businesses to the new mains will take place.

The gas and water service reconnection work may require a hole(s) be dug in front of your home or business near the street and may result in a brief interruption of your gas or water service lasting 4 hours or less.

You will be notified about one day in advance of any planned gas or water interruption.

A GAS INTERRUPTION

Any appliance in your home or business that uses gas will not be available during the interruption (i.e., stove, water heater, furnace/boiler, etc.). Gas pilots will be relit by a M.U.D. technician after the interruption.

TO PREPARE FOR A WATER INTERRUPTION

To continue using a tank-style toilet, fill a container with water and have a bucket nearby to scoop water into the toilet tank and fill about halfway **for each flush**.

Fill containers with water and keep on hand during the interruption to allow for handwashing and drinking.

AFTER A WATER INTERRUPTION

It is normal for air to be in the water lines after a water interruption; please run your COLD water for about 10 minutes to release the air.



Hydrants are generally in easement or Right of Way (ROW) and may be moved to accommodate the new main location and meet all fire codes.

QUESTIONS OR CONCERNS

Email customersuccessteam@mudnebr.com

Call Tina Gutschenritter 402.504.7770

Project Website: www.mudomaha.com/ir

Scan for more info.



