

Si desea más información
acerca este proyecto en
español, por favor llame al
402.554.6666



WATER INFRASTRUCTURE REPLACEMENT

This project may require the replacement of your water service line and meter to your home or business, all at no cost to you.

WHY

- Investing in your neighborhood.
- Part of M.U.D.'s Infrastructure Replacement Program.

WHEN AND HOW LONG

Work will begin very soon however we are not able to give a specific start date due to unplanned delays such as weather, equipment, current projects, or emergencies. Project duration is several months.

WHAT YOU MAY EXPERIENCE

- Installation of new water main. The crew will bore most of the main underground.
- Excavation pits of various sizes and piles of dirt on both sides of the streets are necessary to expose water services and find utilities and may remain during the entire project, especially on corner lots.
- Trucks and equipment, water pipe, safety fence and cones.
- Streets, sidewalks, lawns and landscaping may be affected; however, all will be restored at the end of the project and as weather permits. Because we are experiencing colder weather, lawn restorations and repaving may wait until next Spring 2024.

TRAFFIC AND PARKING

Possible lane restrictions may exist. Parking on the street may be restricted. For the safety of everyone, please slow down when driving in the area.

RECONNECTION WORK TO THE NEW MAIN

- After the new main is installed, reconnection work from the homes or businesses to the new main will take place.
- A hole will be dug in front of your home or business near the street to make this connection.
- This work may result in a brief interruption of your water service. A typical interruption could be 4 hours or less. You will be notified about 24 hours in advance of any planned interruption.

TO PREPARE FOR A WATER INTERRUPTION

To continue using a tank-style toilet, fill a container with water and have a bucket nearby to scoop water into the toilet tank and fill about halfway **for each flush**.

Fill containers with water and keep on hand during the interruption to allow for handwashing and drinking.

AFTER A WATER INTERRUPTION

It is normal for air to be in the water lines after a water interruption; please run your COLD water for about 10 minutes to release the air,



Hydrants are generally in easement or Right of Way (ROW) and may be moved to accommodate the new main location and meet all fire codes.

Scan to watch a video on
what to expect during a water
infrastructure replacement project



QUESTIONS OR CONCERNS

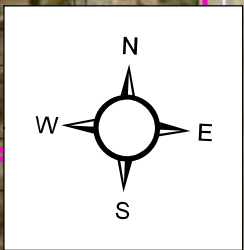
Tina Gutschenritter



402.504.7770

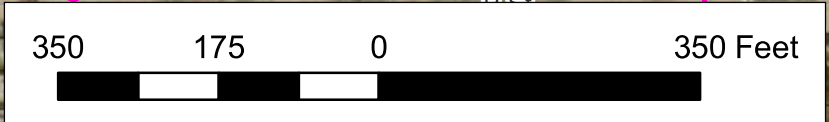
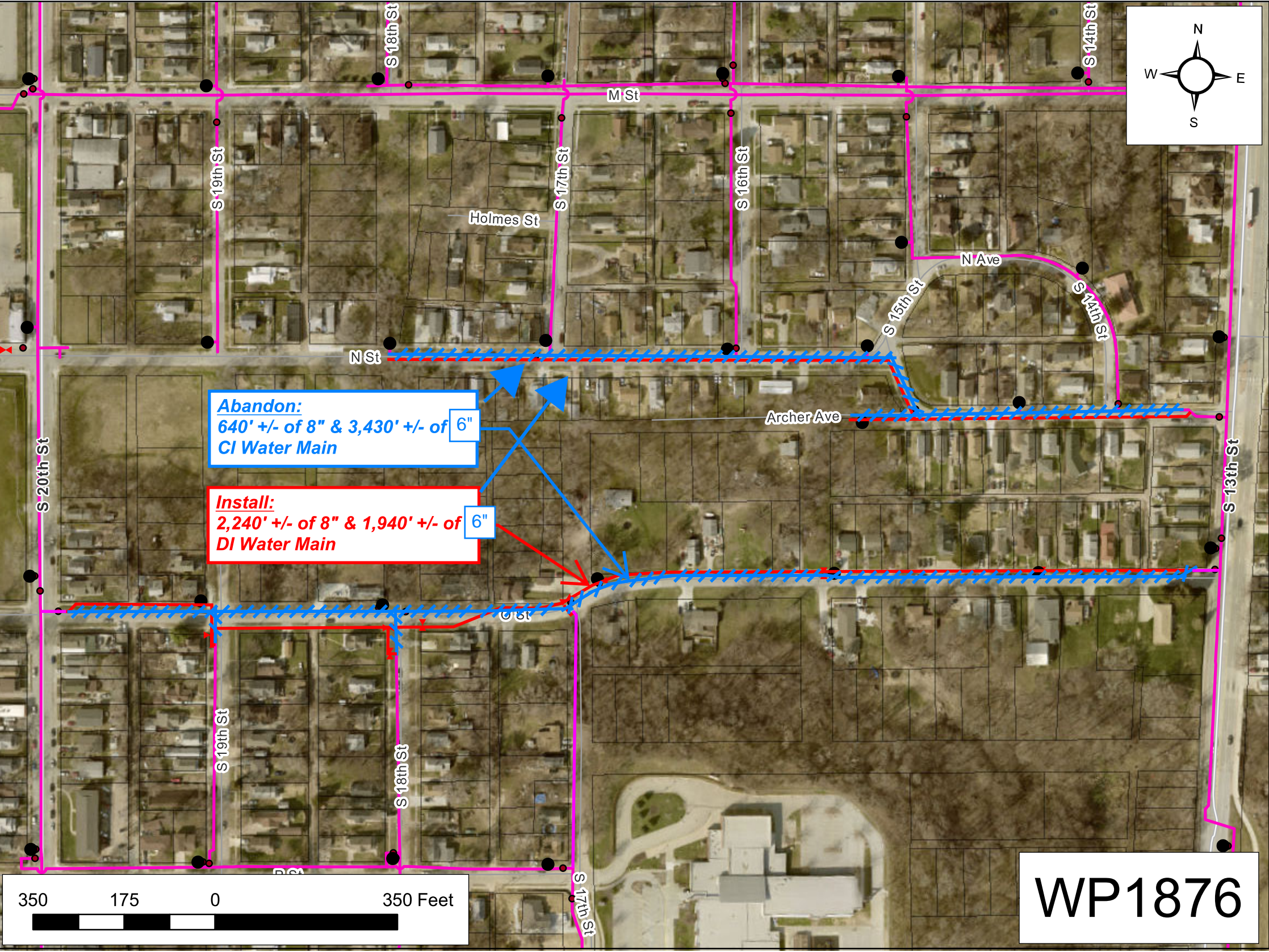


CustomerSuccessTeam@mudnebr.com



Abandon:
640' +/- of 8" & 3,430' +/- of 6"
CI Water Main

Install:
2,240' +/- of 8" & 1,940' +/- of 6"
DI Water Main



WP1876