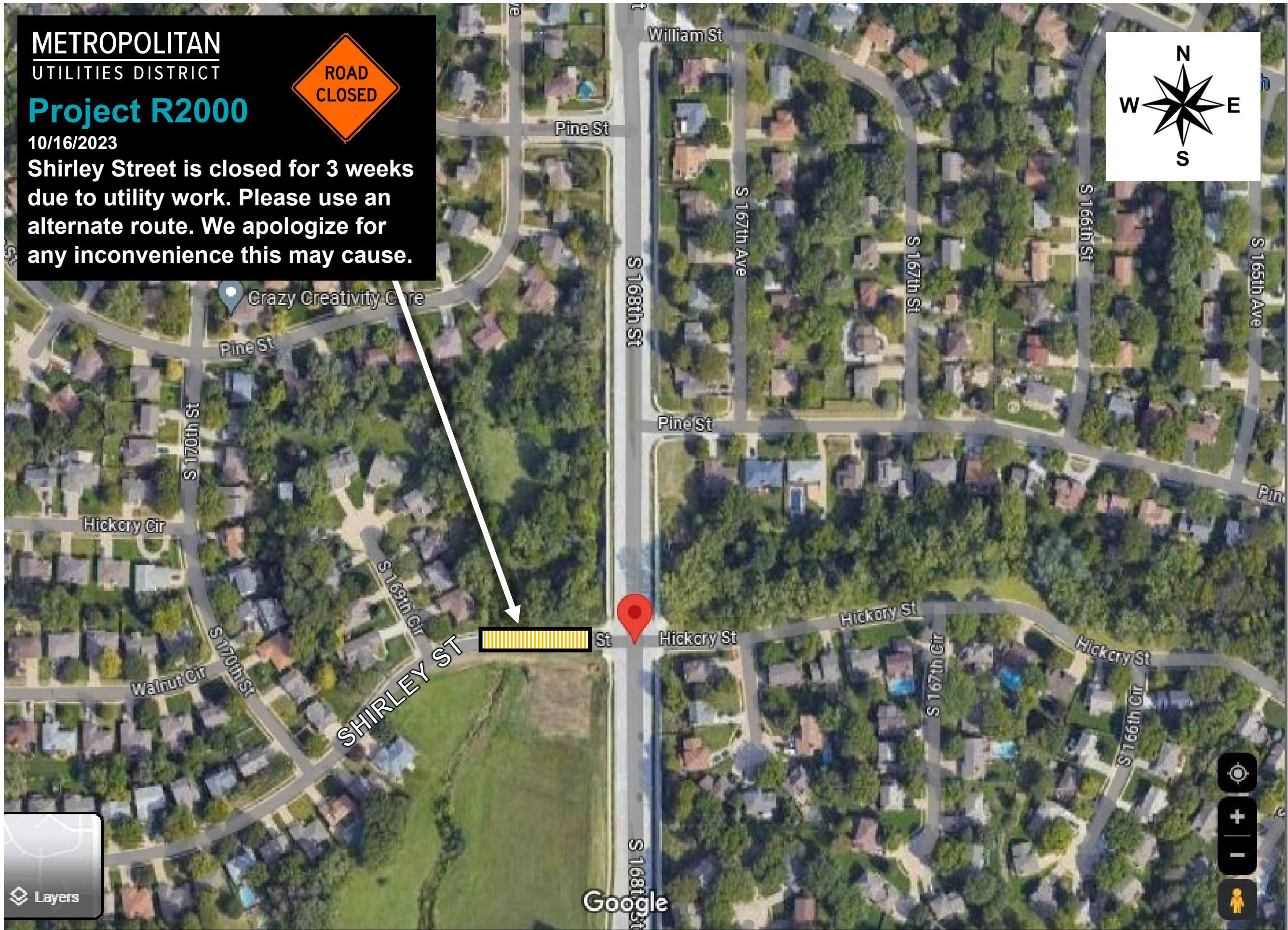
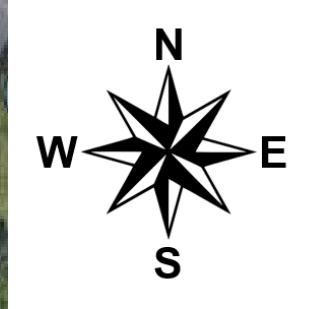


METROPOLITAN
UTILITIES DISTRICT

Project R2000

10/16/2023

Shirley Street is closed for 3 weeks due to utility work. Please use an alternate route. We apologize for any inconvenience this may cause.



METROPOLITAN UTILITIES DISTRICT R2000
168th Ave – Pine to Shirley

Below map is for informational purposes only and is subject to change.

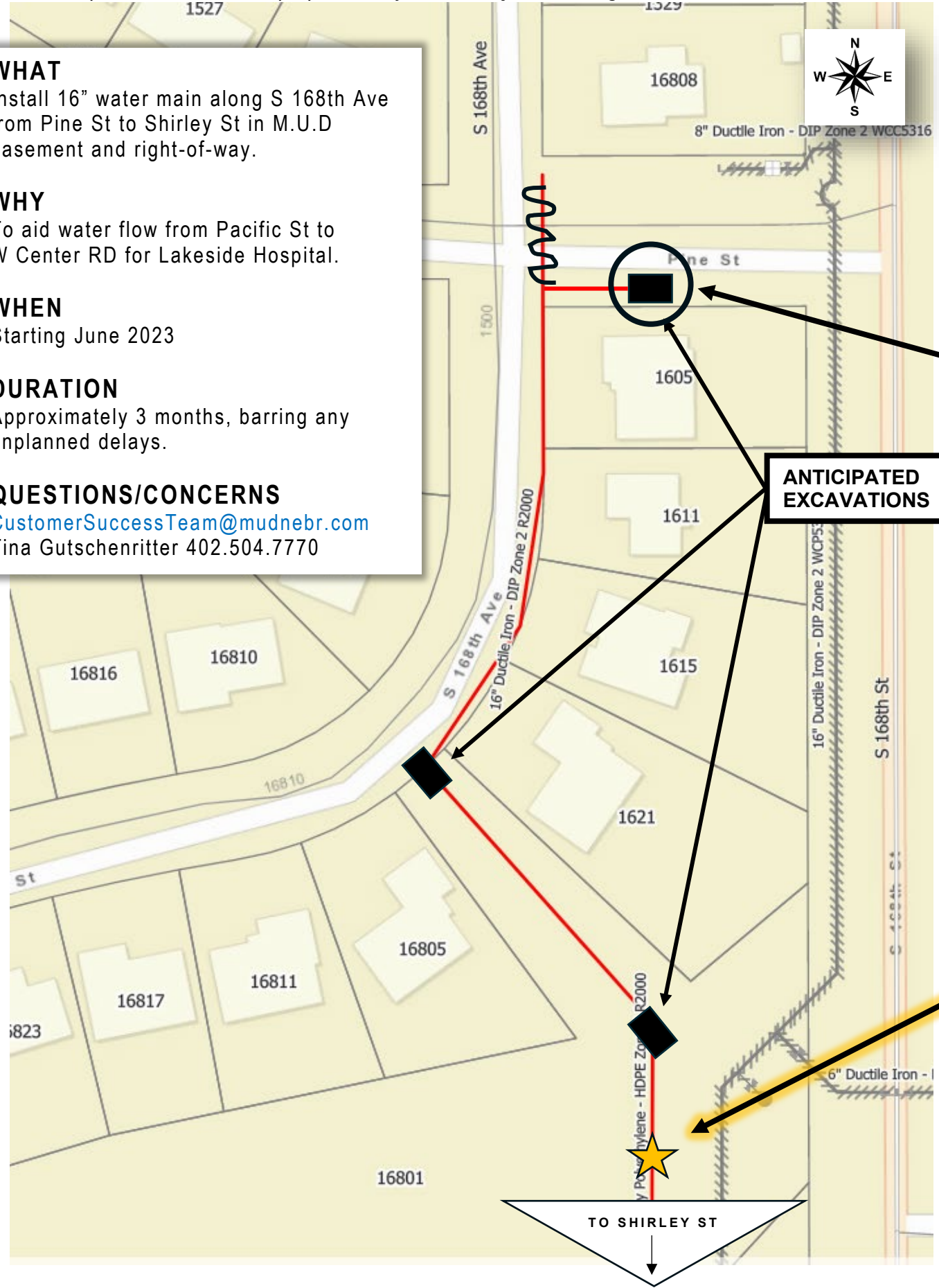
WHAT
 Install 16" water main along S 168th Ave from Pine St to Shirley St in M.U.D easement and right-of-way.

WHY
 To aid water flow from Pacific St to W Center RD for Lakeside Hospital.

WHEN
 Starting June 2023

DURATION
 Approximately 3 months, barring any unplanned delays.

QUESTIONS/CONCERNS
CustomerSuccessTeam@mudnebr.com
 Tina Gutschenritter 402.504.7770



R2000
Update 9/27/2023

Started August 14 and will continue for approximately three months, barring any unplanned delays.

Please keep in mind site restoration may not be completed prior to **HALLOWEEN**. Please use caution when walking in the project area.

WORK TO BE COMPLETED YET

PINE ST
 Excavation will remain until final connection is completed

S 168TH AVE
 Water main work is completed and holes are backfilled
 Concrete will soon be repoured
 Grass seed has been put down

***** CURRENTLY HERE *****

IN WOODED AREA BEHIND HOMES
 Water main installation continues across grass in wooded area backfilling as they go

METROPOLITAN UTILITIES DISTRICT R2000
168th Ave – Pine to Shirley

Below map is for informational purposes only and is subject to change. See page 2 for zoomed out map.

WHAT

Install 16" water main along S 168th Ave from Pine St to Shirley St in M.U.D easement and right-of-way.

WHY

To aid water flow from Pacific St to W Center RD for Lakeside Hospital.

WHEN

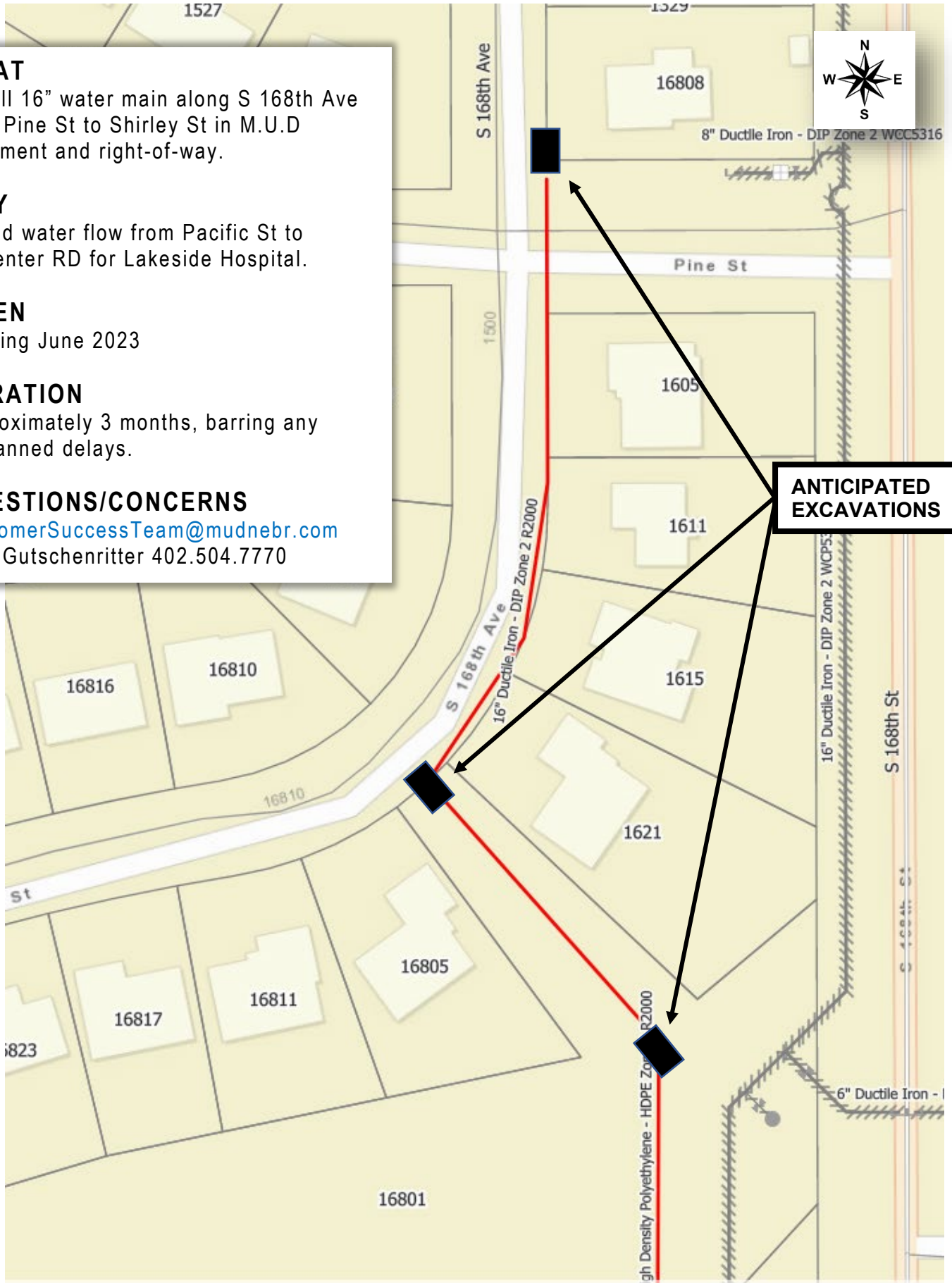
Starting June 2023

DURATION

Approximately 3 months, barring any unplanned delays.

QUESTIONS/CONCERNS

CustomerSuccessTeam@mudnebr.com
Tina Gutschenritter 402.504.7770



PACIFIC ST



**LAKE SIDE
HOSPITAL**

W CENTER RD