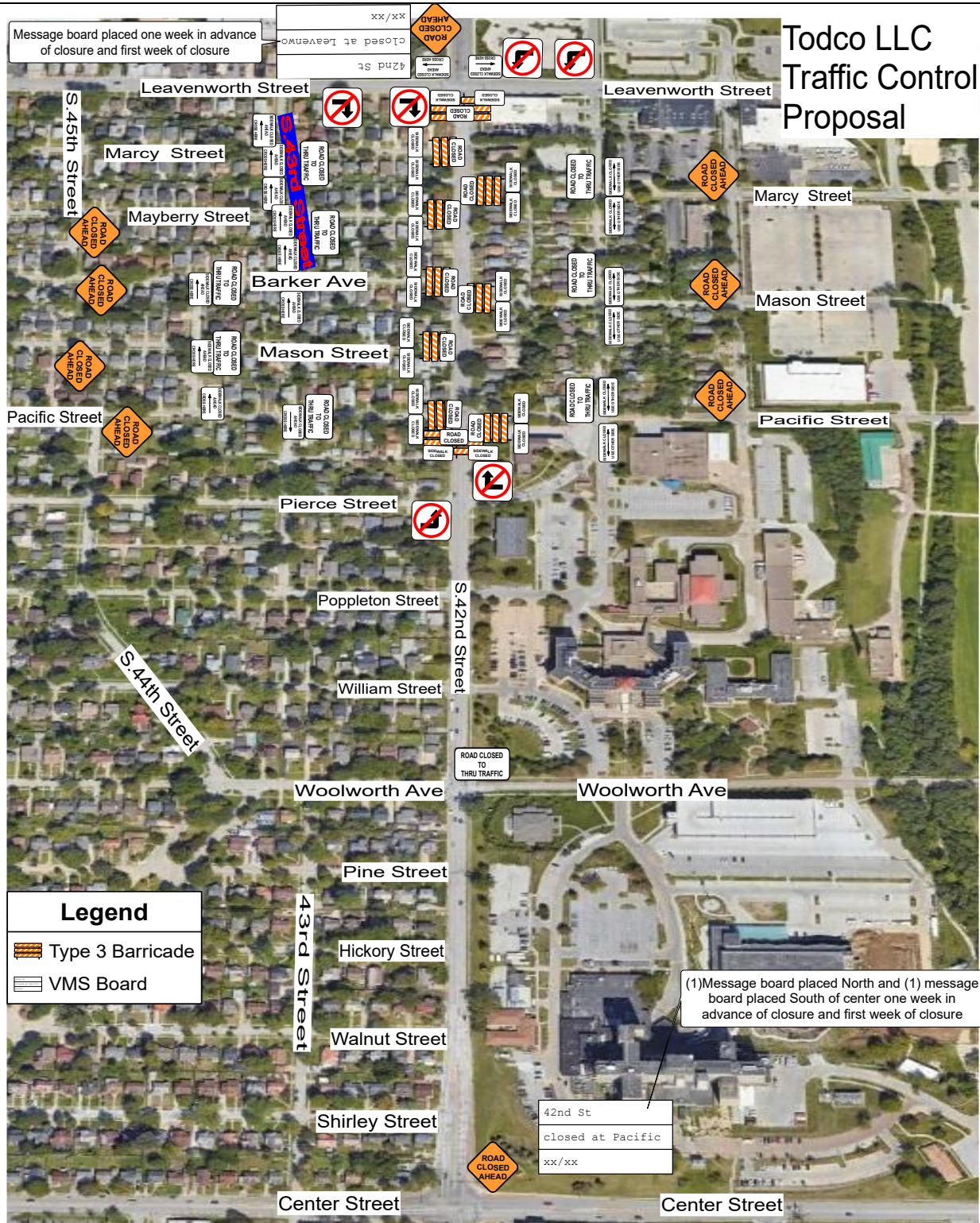




# Todco LLC Traffic Control Proposal



**Legend**


-  Type 3 Barricade
-  VMS Board

**Date:** 8/10/2023 **Project:** 42nd Street Pacific to Leavenworth Emergency Closure

**Comments:**  
 This plan not to scale. This TTCP is for the protection of work area needed for the excavation and repair of utilities. 42nd Street will be closed to through traffic, at Leavenworth on the North and at Pacific St. to the South. Message boards placed one week in advance of closure and for first week of closure. This traffic control to remain in place for approximately 30 days. Sidewalk closures and detours to remain in place until no longer obstructed. All devices and device spacings shall meet MUTCD and City of Omaha minimum standards. WP2047/SAP100093001429



**Date:** 06/28/2022 **Author:** Dave Jobeun **Project:** 72nd St. Nbound at Mercy Road

**Comments:**  
 Proposal by   
 Dave Jobeun, ATSSA Certified Traffic Control Design Specialist

Approved by \_\_\_\_\_  
 City of Omaha Traffic Engineering

Contractor shall ensure this proposal is reviewed and approved by owner's engineer. By ordering sign/barricade services, contractor represents that such review and approval has been made and that Todco LLC may proceed with the work, including any final plans as amended by owner or its engineer.

August 24, 2023

**Si desea más información  
acerca este proyecto en  
español, por favor llame al  
402.554.6666**



## WATER INFRASTRUCTURE REPLACEMENT

This project may require the replacement of your water service line and meter to your home or business, all at no cost to you.

### WHY

- Investing in your neighborhood.
- To continue providing safe, reliable gas and water services by maintaining systems as efficiently and cost-effectively as possible.
- Part of M.U.D.'s Infrastructure Replacement Program.

### WHEN AND HOW LONG

Work will begin very soon however we are not able to give a specific start date due to unplanned delays such as weather, equipment, current projects, or emergencies. Project duration is approximately two months or more.

### WHAT YOU MAY EXPERIENCE

- Installation of new water main.
- Excavation pits of various sizes and piles of dirt – some may remain during the entire project.
- Trucks and equipment, water pipe, safety fence and cones.
- Streets, sidewalks, lawns and landscaping may be affected; however, all will be restored at the end of the project and as weather permits.

### TRAFFIC AND PARKING

- Possible lane restrictions.
- Residents will be able to get in and out of their properties.
- Parking on the street is not recommended and may be restricted during the project due to the work.
- For the safety of you and our crews, please slow down when driving in the area.

### RECONNECTION WORK TO THE NEW MAIN

- After the new main is installed, reconnection work from the homes or businesses to the new main will take place.
- A hole will be dug in front of your home or business near the street to make this connection.
- This work may result in a brief interruption of your water service.
- A typical interruption could be 4 hours or less.
- You will be notified about 24 hours in advance of any planned interruption.

### TO PREPARE FOR A WATER INTERRUPTION

To continue using a tank-style toilet, fill a container with water and have a bucket nearby to scoop water into the toilet tank and fill about halfway **for each flush**.

Fill containers with water and keep on hand during the interruption to allow for handwashing and drinking.

### AFTER A WATER INTERRUPTION

It is normal for air to be in the water lines after a water interruption; please run your COLD water for about 10 minutes to release the air.



Hydrants are generally in easement or Right of Way (ROW) and may be moved to accommodate the new main location and meet all fire codes.

### QUESTIONS OR CONCERNS

Tina Gutschenritter



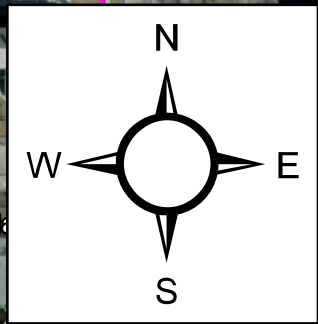
402.504.7770



[CustomerSuccessTeam@mudnebr.com](mailto:CustomerSuccessTeam@mudnebr.com)

Scan for  
more info





Abandon 730' +/- of 8" CI water main.

Install 40' +/- of 6" DI water main and 10' +/- of 8" DI water main.

0 80 160 320 Feet

WP2047