

July 2023

**Si desea más información
acerca este proyecto en
español, por favor llame al
402.554.6666**



GAS INFRASTRUCTURE UPGRADE

This project may require the replacement of your gas service line and meter to your home – all at no cost to you.

WHAT AND WHY

- The gas mains in your neighborhood are being upgraded as part of the gas infrastructure replacement program.
- To continue providing safe, reliable gas services by maintaining systems as efficiently and cost-effectively as possible.

WHEN AND HOW LONG

Work will begin soon and continue for approximately one month, barring any unplanned delays.



WHAT YOU MAY EXPERIENCE

- Technicians will be installing regulators on each outside gas service meter.
- Each home in the project area will need reconnected to the upgraded gas main. You may experience two smaller excavations for the reconnection work – one near the house and one near the street.
- During the reconnection work, you may experience a temporary gas service interruption lasting approximately four (4) hours.
- After your home is reconnected, a technician will need to have access to your home to relight pilots.
- A series of excavation pits to access the existing gas main near the street will be necessary.
- Temporary traffic lane restrictions – for the safety of you and our crews, please slow down when driving in the area.
- Streets, sidewalks, lawns, and landscaping may be affected; however, all will be restored after the project is completed and as weather permits.
- Trucks and equipment, gas pipe, safety fence and cones.

We appreciate your patience as we work to invest in your neighborhood.

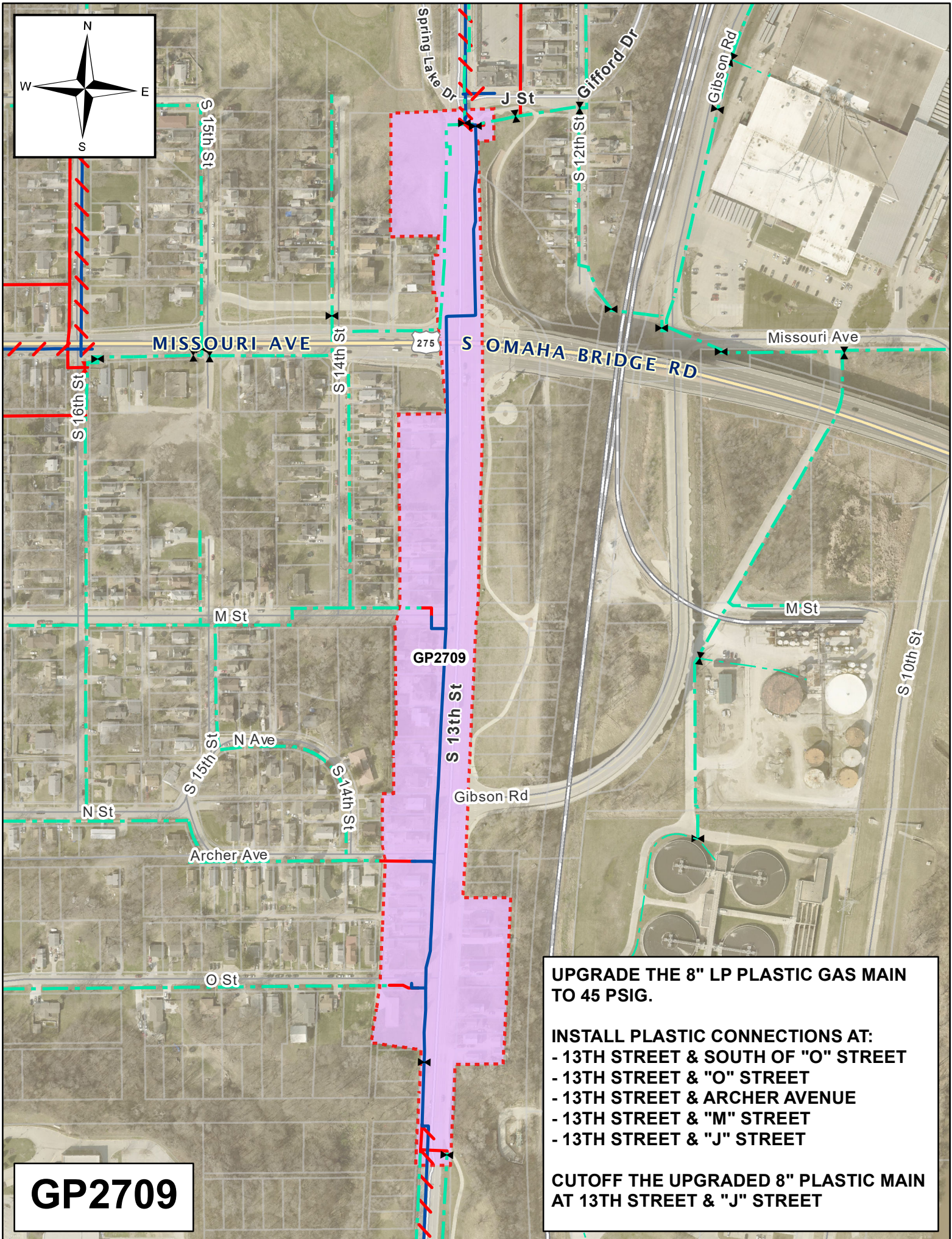
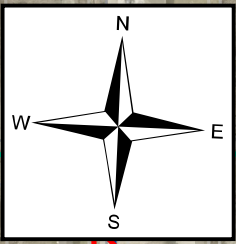
QUESTIONS OR CONCERNS?

Scan for more info.

 customersuccesteam@mudnebr.com  www.mudomaha.com/ir

 Tina Gutschenritter 402.504.7770





GP2709

UPGRADE THE 8" LP PLASTIC GAS MAIN TO 45 PSIG.

INSTALL PLASTIC CONNECTIONS AT:

- 13TH STREET & SOUTH OF "O" STREET
- 13TH STREET & "O" STREET
- 13TH STREET & ARCHER AVENUE
- 13TH STREET & "M" STREET
- 13TH STREET & "J" STREET

CUTOFF THE UPGRADED 8" PLASTIC MAIN AT 13TH STREET & "J" STREET