

May 2023

Si desea más información
acerca este proyecto en
español, por favor llame al
402.554.6666



WATER INFRASTRUCTURE REPLACEMENT

This project may require the replacement of your water service line and meter to your home or business, all at no cost to you.

WHY

- Investing in your neighborhood.
- To continue providing safe, reliable gas and water services by maintaining systems as efficiently and cost-effectively as possible.
- Part of M.U.D.'s Infrastructure Replacement Program.

WHEN AND HOW LONG

- Work will begin soon and continue for a few months, barring any unplanned delays.

WHAT YOU MAY EXPERIENCE

- Installation of new water main.
- Excavation pits of various sizes and piles of dirt – some may remain during the entire project.
- Trucks and equipment, water pipe, safety fence and cones.
- Streets, sidewalks, lawns and landscaping may be affected; however, all will be restored at the end of the project and as weather permits.

TRAFFIC AND PARKING

- Possible lane restrictions.
- Residents will be able to get in and out of their properties.
- Parking on the street is not recommended and may be restricted during the project due to the work.
- For the safety of you and our crews, please slow down when driving in the area.

CONNECTION WORK TO THE NEW MAIN

- **After the new main is installed**, connection work from the homes or businesses to the new main will take place.
- A hole will be dug in front of your home or business near the street to make this connection.
- This work may result in a brief interruption of your water service.
- A typical interruption could be 4 hours or less.
- You will be notified about 24 hours in advance of any planned interruption.

TO PREPARE FOR A WATER INTERRUPTION

To continue using a tank-style toilet, fill a container with water and have a bucket nearby to scoop water into the toilet tank and fill about halfway **for each flush**.

Fill containers with water and keep on hand during the interruption to allow for handwashing and drinking.

AFTER A WATER INTERRUPTION

It is normal for air to be in the water lines after a water interruption; please run your COLD water for about 10 minutes to release the air.



Hydrants are generally in easement or Right of Way (ROW) and may be moved to accommodate the new main location and meet all fire codes.

QUESTIONS OR CONCERNS?

customersuccesteam@mudnebr.com

mudomaha.com/infrastructure-projects

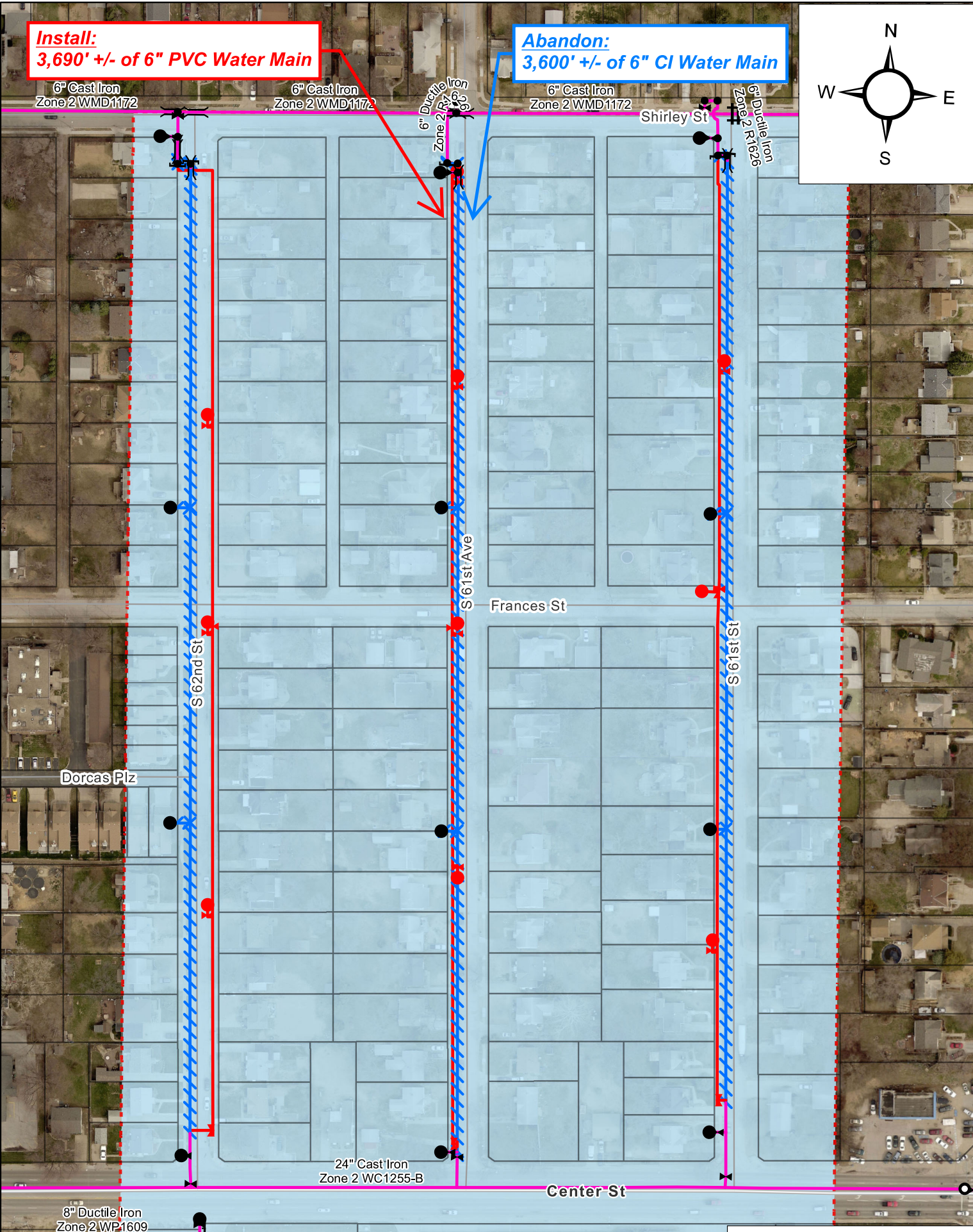
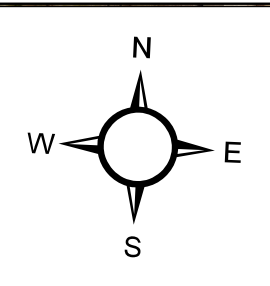
Tina Gutschenritter 402.504.7770

Scan for more info.



Install:
3,690' +/- of 6" PVC Water Main

Abandon:
3,600' +/- of 6" CI Water Main



WP1859