

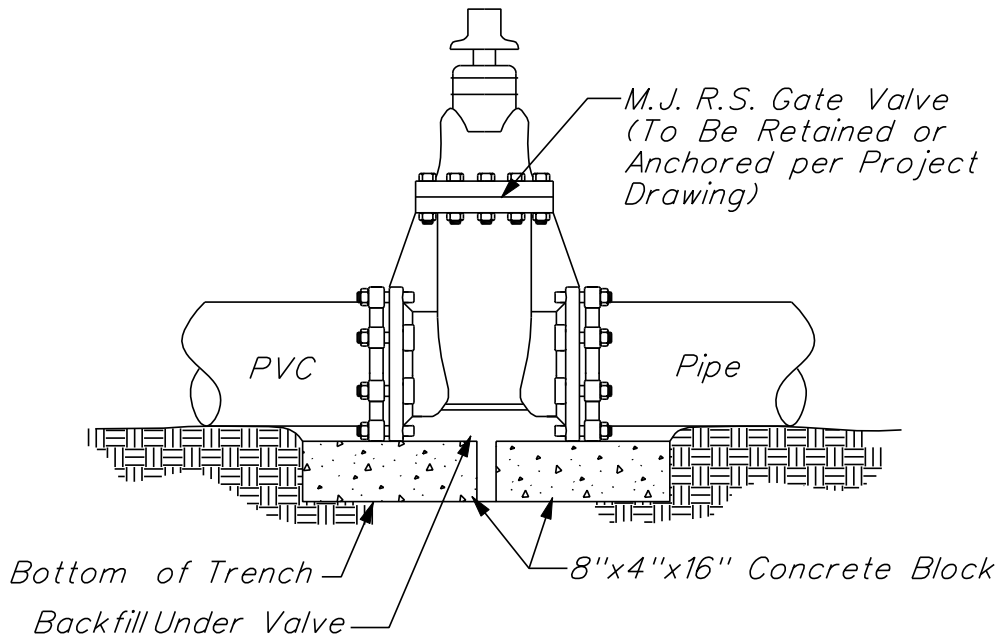
**METROPOLITAN UTILITIES DISTRICT**

No. 2.2.0  
 Page: 1 of 1  
 Effective: 1-22-08  
 Prepared by: JAZ  
 Approved by: JGL

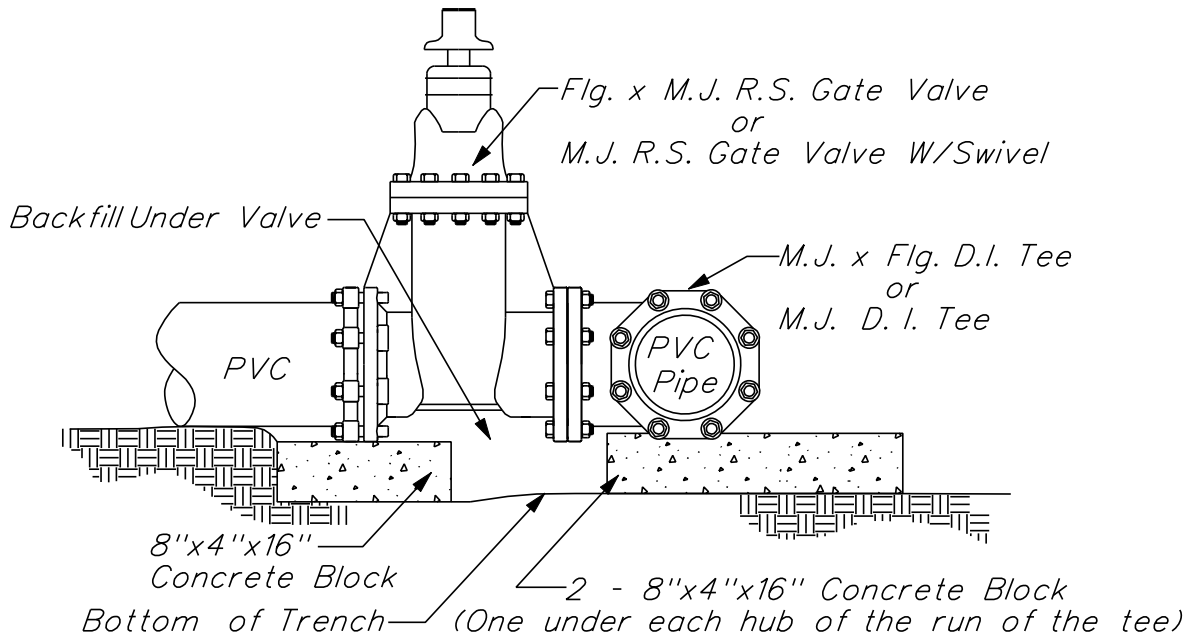
**CONSTRUCTION STANDARD FOR:** Gate Valve Installation on 16" and Smaller PVC Water Mains \*

Supersedes: 2-1-06

\*\*



**TYPICAL IN-LINE VALVE**  
 No Scale



**TYPICAL VALVE OFF BRANCH OF TEE**  
 No Scale

\* Revised Title  
 \*\* Revised Drawing