

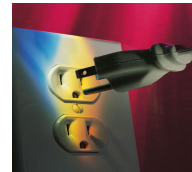
## Memphis Light, Gas and Water



# Fall Publication 2010 Utility Bill Comparisons for Selected U.S. Cities

---

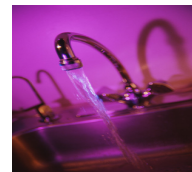
- Electricity



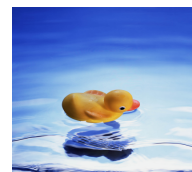
- Natural Gas



- Water



- Wastewater



## **MLGW's Average Residential Bill Ranks 3<sup>rd</sup> Lowest for Fall 2010**

Memphis Light, Gas and Water constantly makes every effort to deliver the highest quality utility service at the lowest possible rates. One way that we measure our performance is to examine how MLGW's average bills compare to those in other cities across the U.S. We survey approximately 50 utilities, including many that are geographically close to Memphis as well as utilities that are similar in size. Some major metro areas are included in this survey, too, which gives us a snapshot of average utility bills effective October 1, 2010. These comparative surveys are not based upon opinion or customer perception; they take into account actual published rates on record from energy providers across the U.S.

Traditionally, MLGW has performed quite well compared to other U.S. utilities in terms of its average bills. These quarterly surveys combine the monthly costs of electric, natural gas, water and wastewater services. This fall, MLGW ranked third lowest for the four combined services.

This fall survey represents the third quarterly rate comparison survey produced by MLGW for 2010. These quarterly surveys focus on residential services only. MLGW will release an annual rates-comparison survey for 2010 next spring.

MLGW's low comparative utility bills revealed in this survey are due in part to continuing competitive natural gas prices from its suppliers, as well as continued low electric rates provided by the Tennessee Valley Authority. MLGW had no budgeted rate increases for 2010.

Even with MLGW's comparatively low rates, customers can take measures to lower their bills even further. Combining a few "baby steps" such as adding insulation, caulking windows and installing a programmable thermostat can add up to big savings. To find out more on how you can save on your bill, go to [www.mlgw.com/babysteps](http://www.mlgw.com/babysteps).



The information in this book has been compiled to ensure maximum accuracy at the time of publication. All utility figures were calculated by the participating companies, except where noted. Cities not listed under particular categories did not provide applicable utility figures. Memphis Light, Gas and Water Division cannot guarantee the correctness of the information furnished and cannot be responsible for errors or omissions. For more information about the survey, please call (901) 528-4607.

**W**e are proud to present the Fall Publication of the 2010 *Utility Bill Comparisons for Selected U.S. Cities: Electricity, Natural Gas, Water and Wastewater*. This publication is compiled by Memphis Light, Gas and Water Division, Memphis, Tennessee. This survey compares residential electric, natural gas, water and wastewater bills at various use levels for rates in effect on October 1, 2010. Only **FIRM RATES** are used in the calculations of the bills. Cities were selected on the basis of size and geographic location.

The following guidelines were used in providing the utility figures:

- Taxes not booked as revenue by the utility are excluded.
- Special discounts for early payment are excluded.
- Seasonal rates are used when applicable.
- Calculations are based on monthly consumption.
- Special rates are not used for electric space heating and water heating.



**Participating Cities**

Rates in effect October 1, 2010

- |                     |                      |                        |
|---------------------|----------------------|------------------------|
| • Austin, TX        | • Bellevue, WA       | • Boston, MA           |
| • Charleston, SC    | • Charlotte, NC      | • Chattanooga, TN      |
| • Chicago, IL       | • Cincinnati, OH     | • Clewiston, FL        |
| • Columbus, OH      | • Decatur, IL        | • Detroit, MI          |
| • El Paso, TX       | • Evansville, IN     | • Frederick County, MD |
| • Greenville, SC    | • Houston, TX        | • Huntsville, AL       |
| • Indianapolis, IN  | • Jackson, MS        | • Jackson, TN          |
| • Jacksonville, FL  | • Kissimmee, FL      | • Knoxville, TN        |
| • Las Vegas, NV     | • Lincoln, NE        | • Little Rock, AR      |
| • Los Angeles, CA   | • Louisville, KY     | • Manchester, NH       |
| • Marietta, GA      | • Memphis, TN        | • Milwaukee, WI        |
| • Nashville, TN     | • New Orleans, LA    | • New York, NY         |
| • Oklahoma City, OK | • Olive Branch, MS   | • Omaha, NE            |
| • Orlando, FL       | • Peoria, IL         | • Philadelphia, PA     |
| • Phoenix, AZ       | • Reno, NV           | • Roanoke, VA          |
| • Rosemead, CA      | • Salt Lake City, UT | • San Antonio, TX      |
| • Seattle, WA       | • Springfield, IL    | • Springfield, MO      |
| • Springfield, VA   | • St. Louis, MO      | • Washington, D.C.     |

**Table of Contents**

About MLGW ..... 2

**Residential Services**

Electricity..... 3

Natural Gas ..... 4

Water ..... 5

Sewer ..... 6

**Typical (Fall) Monthly Bill**

Four-Service Comparison.... 7

**M**emphis Light, Gas and Water Division (MLGW) is the largest three-service municipal utility system in the nation. It is the distributor of electricity, natural gas and water within Memphis and Shelby County.

#### **ELECTRICITY**

MLGW purchases electricity from the Tennessee Valley Authority (TVA), a federal agency that sells electricity on a non-profit basis to its 158 distributors. MLGW is TVA's largest distributor, purchasing approximately 11 percent of TVA's power. There are four different connection points with TVA; any three of these points are capable of supplying MLGW's peak system demand of approximately 3,600,000 kilowatts. MLGW serves more than 423,500 electric customers.

#### **NATURAL GAS**

MLGW currently purchases natural gas and transports it across three open-access pipeline companies, Texas Gas Transmission Corporation, ANR Pipeline Company and Trunkline Gas Company. MLGW furnishes over 30 billion cubic feet of gas per year to its 315,000 gas customers. MLGW has adequate natural gas under contract to supply the present needs of its customers plus substantially higher demands. Large industrial customers have the option of firm service, interruptible service or transportation service for privately purchased gas. By offering a variety of purchase options, MLGW has been able to keep residential, commercial and industrial gas rates extremely competitive with other major U.S. cities.

#### **ARTESIAN WATER**

MLGW owns and operates one of the largest artesian water systems in the world. On a peak day, MLGW can deliver approximately 250 million gallons of water to more than 255,000 customers. In the layer of water-bearing sands beneath the city, there is an abundant supply of naturally pure, high-quality water that will accommodate the daily needs of a city several times the size of Memphis.

#### **WASTEWATER**

Wastewater treatment facilities are provided by the City of Memphis Public Works Department. Total system treatment capacity is 225 million gallons (MGD) per day. Currently, the daily usage throughout the system stands at about 165 million gallons per day, well below capacity.

MLGW has the necessary facilities to supply the utility needs of the growing Memphis economy. MLGW is proud to provide these services in the community at one of the lowest combined utility rates in the nation. The MLGW Economic Development Department works in partnership with the Memphis Area Chamber of Commerce to promote commercial and industrial development in Memphis and Shelby County by encouraging and facilitating the expansion of local industry and the relocation of new industry. The economic growth and development of the Memphis community is a primary concern of MLGW as it strives to improve the quality of life for all of its customers.

## RESIDENTIAL ELECTRIC BILLS

Rates in effect October 1, 2010

Rank	City	State	Company	500	1000	1500	2000	2500	3000
1	Jackson	MS	Entergy Mississippi, Inc	\$53.12	\$71.84	\$87.35	\$121.58	\$155.81	\$224.27
2	St. Louis	MO	AmerenUE	\$44.21	\$74.74	\$99.62	\$124.50	\$149.38	\$174.26
3	Seattle	WA	Seattle City Light	\$27.56	\$75.46	\$123.36	\$171.26	\$219.16	\$267.06
4	Springfield	MO	City Utilities of Springfield, MO	\$43.60	\$78.34	\$107.64	\$136.94	\$166.24	\$195.54
5	Lincoln	NE	Lincoln Electric System	\$46.05	\$82.03	\$113.53	\$145.03	\$176.53	\$208.03
6	Louisville	KY	Louisville Gas and Electric Company	\$45.48	\$82.52	\$119.56	\$156.60	\$193.64	\$230.68
7	New Orleans	LA	Entergy New Orleans, Inc.	\$59.61	\$85.35	\$111.08	\$162.55	\$214.03	\$316.97
8	Indianapolis	IN	Indianapolis Power & Light Company	\$54.02	\$85.57	\$117.09	\$148.61	\$180.17	\$211.69
9	Salt Lake City	UT	PacifiCorp	\$44.86	\$85.75	\$126.63	\$167.52	\$208.40	\$249.29
10	Peoria	IL	AmerenCILCO	\$56.46	\$89.11	\$112.96	\$136.81	\$160.66	\$184.51
11	Omaha	NE	Omaha Public Power District	\$49.66	\$89.66	\$116.41	\$143.16	\$169.91	\$196.66
12	Huntsville	AL	Huntsville Utilities	\$50.27	\$94.77	\$140.08	\$188.58	\$237.09	\$199.79
13	Springfield	IL	AmerenCIPS	\$57.60	\$95.20	\$130.21	\$165.22	\$200.24	\$235.25
14	Little Rock	AR	Entergy Arkansas, Inc	\$51.35	\$95.37	\$124.94	\$154.46	\$154.46	\$213.54
15	San Antonio	TX	CPS Energy	\$51.82	\$95.38	\$138.95	\$182.51	\$226.08	\$269.64
16	Marietta	GA	Marietta Power and Water	\$55.52	\$97.44	\$136.97	\$176.49	\$216.01	\$255.53
17	Myrtle Beach	SC	South Carolina Public Service Authority	\$53.79	\$97.58	\$141.37	\$185.16	\$228.95	\$272.74
18	Austin	TX	Austin Energy	\$42.02	\$99.38	\$156.75	\$214.11	\$271.48	\$328.84
19	Bellevue	WA	Puget Sound Energy	\$49.87	\$99.68	\$151.29	\$202.90	\$254.51	\$306.12
20	Decatur	IL	AmerenIP	\$59.84	\$100.00	\$138.11	\$176.21	\$214.31	\$252.42
21	Roanoke	VA	Appalachian Power Company	\$55.12	\$101.87	\$148.64	\$195.39	\$242.16	\$288.91
<b>22</b>	<b>Memphis</b>	<b>TN</b>	<b>Memphis Light, Gas and Water</b>	<b>\$55.81</b>	<b>\$102.12</b>	<b>\$148.44</b>	<b>\$194.75</b>	<b>\$245.34</b>	<b>\$295.92</b>
23	Knoxville	TN	Knoxville Utility Board	\$55.16	\$102.32	\$149.48	\$196.64	\$243.80	\$290.96
24	Chattanooga	TN	Electric Power Board	\$55.30	\$103.35	\$151.40	\$199.45	\$247.50	\$295.55
25	Los Angeles	CA	Los Angeles Department of Water & Power	\$68.04	\$104.67	\$141.32	\$230.27	\$320.95	\$502.32
26	Olive Branch	MS	Northcentral Electric Power Association	\$58.13	\$106.23	\$154.33	\$202.43	\$250.53	\$298.63
27	Jackson	TN	Jackson Energy Authority	\$61.78	\$108.55	\$155.33	\$202.10	\$248.88	\$295.65
28	Nashville	TN	Nashville Electric Service	\$61.20	\$110.67	\$160.15	\$209.62	\$259.10	\$308.57
29	Kissimmee	FL	Kissimmee Utility Authority	\$60.78	\$111.40	\$180.99	\$237.93	\$294.87	\$351.81
30	Columbus	OH	Department of Public Utilities	\$53.70	\$111.60	\$162.05	\$212.50	\$262.95	\$313.40
31	Reno	NV	Sierra Pacific Power Company	\$61.77	\$115.25	\$168.77	\$222.25	\$275.77	\$329.25
32	Clewiston	FL	Clewiston Utilities	\$63.78	\$119.77	\$177.06	\$233.69	\$283.73	\$347.51
33	Orlando	FL	Orlando Utilities Commission	\$63.91	\$119.82	\$185.73	\$251.64	\$317.55	\$383.46
34	Charleston	SC	South Carolina Electric and Gas	\$64.00	\$123.00	\$178.00	\$234.00	\$289.00	\$344.00
35	Chicago	IL	Commonwealth Edison	\$66.35	\$123.31	\$179.21	\$235.09	\$290.99	\$346.86
36	Las Vegas	NV	Nevada Power Company	\$67.21	\$126.39	\$185.60	\$244.78	\$303.99	\$363.17
37	Jacksonville	FL	JEA	\$66.34	\$126.87	\$187.41	\$247.94	\$308.47	\$371.65
38	Milwaukee	WI	We Energies	\$69.58	\$131.05	\$191.02	\$250.98	\$310.95	\$370.91
39	Evansville	IN	Vectren (Southern Indiana Gas and Electric Co)	\$72.45	\$135.36	\$198.24	\$261.14	\$324.06	\$386.96
40	Phoenix	AZ	Arizona Public Service	\$64.15	\$137.37	\$218.21	\$299.05	\$379.89	\$460.73
41	Cincinnati	OH	Duke Energy Ohio	\$72.22	\$138.36	\$184.64	\$230.91	\$276.97	\$323.02
42	Boston	MA	NSTAR Electric and Gas	\$84.98	\$163.51	\$242.06	\$320.59	\$399.14	\$477.67
43	Manchester	NH	Public Service of New Hampshire	\$90.59	\$169.58	\$248.57	\$327.56	\$406.55	\$485.54
44	Rosemead	CA	Southern California Edison	\$74.56	\$207.02	\$359.72	\$512.35	\$664.99	\$817.62

## RESIDENTIAL GAS BILLS

Rates in effect October 1, 2010

Rank	City	State	Utility Company	10	25	35	50	60	75	100
1	El Paso	TX	Texas Gas Service Company	\$15.15	\$21.68	\$26.03	\$32.56	\$36.91	\$43.44	\$54.32
2	Los Angeles	CA	Southern California Gas Company	\$12.84	\$24.59	\$32.40	\$44.15	\$54.39	\$69.74	\$95.32
3	Austin	TX	Texas Gas Service Company	\$15.76	\$24.79	\$30.80	\$39.82	\$45.83	\$54.85	\$69.89
4	Boston	MA	NSTAR Electric and Gas	\$15.12	\$26.21	\$31.65	\$39.80	\$45.22	\$53.38	\$66.96
5	Milwaukee	WI	We Energies (Wisconsin Gas)	\$16.67	\$27.53	\$34.77	\$45.64	\$52.88	\$63.74	\$81.84
6	San Antonio	TX	CPS Energy	\$16.49	\$27.81	\$35.35	\$46.67	\$54.21	\$65.52	\$84.38
7	Huntsville	AL	Huntsville Utilities	\$14.20	\$28.75	\$33.60	\$53.00	\$62.70	\$77.25	\$101.50
8	Evansville	IN	Vectren (Southern Indiana Gas and Electric Co)	\$18.21	\$29.02	\$36.21	\$47.03	\$53.89	\$64.16	\$81.29
9	Omaha	NE	Metropolitan Utilities District	\$21.24	\$29.11	\$34.35	\$42.22	\$47.46	\$55.32	\$68.43
10	Reno	NV	Sierra Pacific Power Company	\$15.79	\$29.75	\$39.05	\$53.00	\$62.29	\$76.25	\$99.49
11	Olive Branch	MS	City of Olive Branch-Utility Services Department	\$14.85	\$30.68	\$39.60	\$52.97	\$61.89	\$75.26	\$97.55
12	Indianapolis	IN	Citizens Energy Group	\$19.14	\$31.34	\$39.47	\$51.29	\$58.44	\$69.18	\$87.07
13	Houston	TX	CenterPoint Energy-Texas	\$21.08	\$32.04	\$39.34	\$50.29	\$57.59	\$68.55	\$86.80
14	Nashville	TN	Piedmont Natural Gas (Nashville Gas)	\$18.90	\$32.24	\$41.14	\$54.49	\$63.38	\$76.73	\$98.97
15	Knoxville	TN	Knoxville Utility Board	\$16.33	\$32.86	\$43.89	\$60.43	\$70.22	\$84.90	\$109.38
16	Peoria	IL	AmerenCILCO	\$23.54	\$33.69	\$40.46	\$50.61	\$57.38	\$67.53	\$84.46
17	Charlotte	NC	Piedmont Natural Gas	\$19.48	\$33.70	\$43.18	\$57.40	\$66.88	\$81.11	\$104.81
18	Jackson	TN	Jackson Energy Authority	\$17.90	\$33.89	\$43.12	\$56.96	\$66.18	\$80.02	\$103.09
19	Louisville	KY	Louisville Gas and Electric Company	\$21.17	\$33.95	\$42.47	\$55.26	\$63.79	\$76.56	\$97.87
20	Detroit	MI	DTE Energy-Michigan Consolidated Gas Company	\$19.92	\$34.04	\$43.46	\$57.59	\$67.00	\$81.13	\$104.67
<b>21</b>	<b>Memphis</b>	<b>TN</b>	<b>Memphis Light, Gas and Water</b>	<b>\$19.91</b>	<b>\$34.78</b>	<b>\$44.69</b>	<b>\$59.55</b>	<b>\$69.46</b>	<b>\$84.33</b>	<b>\$109.10</b>
22	New Orleans	LA	Entergy New Orleans, Inc.	\$21.12	\$34.89	\$44.07	\$57.85	\$67.04	\$80.81	\$103.78
23	Springfield	MO	City Utilities of Springfield, MO	\$21.77	\$34.92	\$43.69	\$56.85	\$65.61	\$78.76	\$100.68
24	Greenville	SC	Piedmont Natural Gas	\$19.16	\$35.90	\$47.06	\$63.81	\$74.97	\$91.71	\$119.61
25	Bellevue	WA	Puget Sound Energy	\$20.49	\$36.23	\$46.73	\$62.47	\$72.96	\$88.70	\$114.93
25	Seattle	WA	Puget Sound Energy	\$20.49	\$36.23	\$46.73	\$62.47	\$72.96	\$88.70	\$114.93
27	Washington D.C.		Washington Gas District of Columbia	\$19.81	\$37.59	\$49.44	\$67.24	\$79.08	\$96.87	\$126.51
28	Springfield	VA	Washington Gas (Virginia)	\$20.76	\$38.41	\$48.52	\$63.69	\$73.80	\$88.96	\$114.24
29	Decatur	IL	AmerenIP	\$28.36	\$38.87	\$45.87	\$56.38	\$63.39	\$73.90	\$91.41
30	Frederick County	MD	Washington Gas (Maryland)	\$21.86	\$39.33	\$50.98	\$67.96	\$78.58	\$94.54	\$121.12
31	Phoenix	AZ	Southwest Gas Company-Arizona	\$22.74	\$40.81	\$52.85	\$70.92	\$82.96	\$101.03	\$131.13
32	Springfield	IL	AmerenCIPS	\$28.74	\$41.20	\$49.50	\$61.96	\$70.27	\$82.72	\$103.48
33	Chicago	IL	The Peoples Gas Light and Coke Company	\$29.09	\$41.55	\$49.85	\$62.34	\$68.53	\$77.84	\$93.37
34	St. Louis	MO	Laclede Gas	\$29.20	\$42.54	\$51.18	\$63.77	\$72.16	\$84.74	\$105.72
35	Little Rock	AR	CenterPoint Energy-Arkansas	\$23.27	\$43.54	\$57.06	\$77.33	\$89.03	\$106.60	\$135.89
36	Chattanooga	TN	Chattanooga Gas Company	\$19.93	\$47.65	\$82.30	\$116.95	\$151.60	\$186.25	\$220.90
37	Cincinnati	OH	Duke Energy Ohio	\$37.38	\$47.69	\$54.56	\$64.88	\$71.73	\$82.03	\$99.21

# RESIDENTIAL WATER BILLS

Rates in effect October 1, 2010

Rank	City	State	Company	5 CCF	10 CCF	15 CCF	Meter Size
1	Memphis	TN	Memphis Light, Gas and Water	\$6.55	\$13.10	\$19.65	5/8"
2	Orlando	FL	Orlando Utilities Commission	\$9.40	\$13.71	\$20.07	5/8"
3	Huntsville	AL	Huntsville Utilities	\$7.56	\$14.70	\$20.98	5/8"
4	Chicago	IL	City of Chicago-Water and Sewer Division	\$7.52	\$15.03	\$22.55	5/8"
5	Little Rock	AR	Central Arkansas Water	\$9.52	\$16.47	\$23.42	5/8"
6	Salt Lake City	UT	Salt Lake City Public Utilities	\$12.44	\$17.09	\$21.74	5/8"
7	Omaha	NE	Metropolitan Utilities District	\$13.03	\$17.83	\$22.64	5/8"
8	Milwaukee	WI	Milwaukee Water Works	\$12.09	\$18.79	\$25.49	5/8"
9	Phoenix	AZ	City of Phoenix	\$6.36	\$19.12	\$34.57	5/8"
10	Nashville	TN	Metro Water Services	\$9.64	\$20.58	\$31.84	5/8"
11	Jacksonville	FL	JEA	\$16.53	\$22.19	\$29.85	5/8"
12	Austin	TX	Austin Water Utility	\$13.26	\$23.06	\$41.94	5/8"
13	Cincinnati	OH	Greater Cincinnati Water Works	\$13.84	\$23.64	\$33.44	5/8"
14	San Antonio	TX	San Antonio Water System	\$15.88	\$24.98	\$35.60	5/8"
15	St. Louis	MO	St. Louis Water Division	\$16.80	\$25.65	\$34.50	5/8"
16	Louisville	KY	Louisville Water Company	\$15.82	\$26.09	\$36.94	5/8"
17	Oklahoma City	OK	City of Oklahoma City, Utilities Department	\$18.54	\$27.33	\$36.12	5/8"
18	Springfield	MO	City Utilities of Springfield, MO	\$16.75	\$27.40	\$38.05	5/8"
19	Columbus	OH	Department of Public Utilities	\$16.77	\$28.72	\$40.67	5/8"
20	Reno	NV	Truckee Meadows Water Authority	\$20.86	\$28.80	\$39.92	5/8"
21	Indianapolis	IN	Department of Waterworks-Indianapolis Water	\$19.19	\$29.27	\$39.36	5/8"
22	New York	NY	New York City Water Board	\$14.75	\$29.50	\$44.25	5/8"
23	Knoxville	TN	Knoxville Utility Board	\$16.45	\$29.70	\$42.95	5/8"
24	Jackson	TN	Jackson Energy Authority	\$16.49	\$29.88	\$41.28	5/8"
25	Chattanooga	TN	Tennessee-American Water Company	\$14.90	\$30.93	\$46.97	5/8"
26	New Orleans	LA	Sewerage and Water Board of New Orleans	\$14.94	\$31.47	\$48.00	5/8"
27	Olive Branch	MS	City of Olive Branch-Utility Services Department	\$22.05	\$33.76	\$45.46	5/8"
28	Clewiston	FL	Clewiston Utilities	\$20.62	\$35.25	\$50.35	5/8"
29	Marietta	GA	Marietta Power and Water	\$20.06	\$35.50	\$54.82	5/8"
30	Philadelphia	PA	Philadelphia Water Department	\$20.87	\$35.79	\$50.72	5/8"
31	Los Angeles	CA	Los Angeles Department of Water & Power	\$18.70	\$37.40	\$56.10	5/8"
32	Boston	MA	Boston Water and Sewer Commission	\$19.43	\$38.86	\$60.40	5/8"
33	Bellevue	WA	City of Bellevue	\$26.54	\$39.79	\$58.09	5/8"
34	Seattle	WA	Seattle Public Utilities	\$30.06	\$47.56	\$65.06	5/8"

# RESIDENTIAL WASTEWATER BILLS

Rates in effect October 1, 2010

Rank	City	State	Company	5 CCF	10 CCF	15 CCF
1	Chicago	IL	City of Chicago-Water and Sewer Division	\$6.46	\$12.93	\$19.39
2	Salt Lake City	UT	Salt Lake City Public Utilities	\$6.90	\$13.80	\$20.70
<b>3</b>	<b>Memphis</b>	<b>TN</b>	<b>City of Memphis/Division of Public Works</b>	<b>\$8.48</b>	<b>\$16.96</b>	<b>\$25.44</b>
4	Omaha	NE	City of Omaha - Public Works Department	\$14.14	\$18.45	\$22.76
5	Milwaukee	WI	Milwaukee Metropolitan Sewerage District	\$12.44	\$19.14	\$25.84
6	Springfield	MO	City Utilities of Springfield, MO	\$14.44	\$19.54	\$24.64
7	San Antonio	TX	San Antonio Water System	\$12.38	\$20.07	\$27.76
8	Oklahoma City	OK	City of Oklahoma City, Utilities Department	\$13.18	\$23.57	\$33.97
9	Phoenix	AZ	City of Phoenix-Sewer Department	\$13.86	\$26.71	\$39.57
10	Indianapolis	IN	City of Indianapolis Department of Public Works	\$17.19	\$28.09	\$39.54
11	Reno	NV	City of Reno-Sewer Department	\$30.30	\$30.30	\$30.30
12	St. Louis	MO	Metropolitan St. Louis Sewer District	\$21.50	\$31.60	\$41.70
13	Los Angeles	CA	City of Los Angeles Bureau of Sanitation	\$16.35	\$32.70	\$49.05
14	Clewiston	FL	Clewiston Utilities	\$18.88	\$32.75	\$46.46
15	Jackson	TN	Jackson Energy Authority	\$19.98	\$36.43	\$52.89
16	Columbus	OH	Department of Public Utilities	\$20.18	\$37.08	\$53.98
17	Louisville	KY	Metropolitan Sewer District	\$27.45	\$37.36	\$47.27
18	Huntsville	AL	Huntsville Utilities	\$19.04	\$38.08	\$57.11
19	Philadelphia	PA	Philadelphia Water Department	\$28.34	\$38.99	\$49.64
20	Little Rock	AR	Little Rock Wastewater	\$24.64	\$40.09	\$55.54
21	Olive Branch	MS	City of Olive Branch-Utility Services Department	\$29.56	\$41.11	\$52.67
22	New Orleans	LA	Sewerage and Water Board of New Orleans	\$31.80	\$41.82	\$56.93
23	Nashville	TN	Metro Water Services	\$20.41	\$42.56	\$64.71
24	New York	NY	New York City Water Board	\$23.45	\$46.90	\$70.15
25	Marietta	GA	Marietta Power and Water	\$21.16	\$49.40	\$77.64
26	Jacksonville	FL	JEA	\$29.68	\$49.76	\$71.00
27	Boston	MA	Boston Water and Sewer Commission	\$25.16	\$50.31	\$77.17
28	Austin	TX	Austin Water Utility	\$28.81	\$57.72	\$86.63
29	Cincinnati	OH	Greater Cincinnati Water Works	\$36.97	\$58.33	\$79.69
30	Bellevue	WA	City of Bellevue	\$45.15	\$58.40	\$71.65
31	Knoxville	TN	Knoxville Utility Board	\$37.86	\$75.21	\$108.41
32	Chattanooga	TN	City of Chattanooga-Public Works	\$38.59	\$77.17	\$115.76
33	Seattle	WA	Seattle Public Utilities	\$44.90	\$89.80	\$134.70

# TYPICAL (Fall) MONTHLY RESIDENTIAL UTILITY BILLS

Rates in effect October 1, 2010

Rank	City	State	1000 kWh Electricity	25 CCF Natural Gas	10 CCF Water	10 CCF Wastewater	Total
1	Omaha	NE	\$89.66	\$29.11	\$17.83	\$18.45	\$155.05
2	Springfield	MO	\$78.34	\$34.92	\$27.40	\$19.54	\$160.20
<b>3</b>	<b>Memphis</b>	<b>TN</b>	<b>\$102.12</b>	<b>\$34.78</b>	<b>\$13.10</b>	<b>\$16.96</b>	<b>\$166.96</b>
4	San Antonio	TX	\$95.38	\$27.81	\$24.98	\$20.07	\$168.24
5	Indianapolis	IN	\$85.57	\$31.34	\$29.27	\$28.09	\$174.27
6	St. Louis	MO	\$74.74	\$42.54	\$25.65	\$31.60	\$174.53
7	Huntsville	AL	\$94.77	\$28.75	\$14.70	\$38.08	\$176.30
8	Louisville	KY	\$82.52	\$33.95	\$26.09	\$37.36	\$179.92
9	Chicago	IL	\$123.31	\$41.55	\$15.03	\$12.93	\$192.82
10	New Orleans	LA	\$85.35	\$34.89	\$31.47	\$41.82	\$193.53
11	Little Rock	AR	\$95.37	\$43.54	\$16.47	\$40.09	\$195.47
12	Milwaukee	WI	\$131.05	\$27.53	\$18.79	\$19.14	\$196.51
13	Los Angeles	CA	\$104.67	\$24.59	\$37.40	\$32.70	\$199.36
14	Reno	NV	\$115.25	\$29.75	\$28.80	\$30.30	\$204.10
15	Austin	TX	\$99.38	\$24.79	\$23.06	\$57.72	\$204.95
16	Nashville	TN	\$110.67	\$32.24	\$20.58	\$42.56	\$206.05
17	Jackson	TN	\$108.55	\$33.89	\$29.88	\$36.43	\$208.76
18	Olive Branch	MS	\$106.23	\$30.68	\$33.76	\$41.11	\$211.78
19	Phoenix	AZ	\$137.37	\$40.81	\$19.12	\$26.71	\$224.01
20	Bellevue	WA	\$99.68	\$36.23	\$39.79	\$58.40	\$234.09
21	Knoxville	TN	\$102.32	\$32.86	\$29.70	\$75.21	\$240.09
22	Seattle	WA	\$75.46	\$36.23	\$47.56	\$89.80	\$249.05
23	Chattanooga	TN	\$103.35	\$47.65	\$30.93	\$77.17	\$259.10
24	Cincinnati	OH	\$138.36	\$47.69	\$23.64	\$58.33	\$268.02
25	Boston	MA	\$163.51	\$26.21	\$38.86	\$50.31	\$278.89

**MEMPHIS LIGHT, GAS AND WATER DIVISION**  
**Rates and Regulatory Affairs**  
**P.O. Box 430**  
**Memphis, TN 38101-0430**  
**(901) 528-4607**



**[www.mlgw.com](http://www.mlgw.com)**

12-2010/MLGW/GB/1M