

Appendix B

Stream Gaging Data



[Water Resources](#)

National Water Information System:
Web Interface

Data Category:

Geographic Area:

News: [Available Now in NWISWeb](#)

USGS 06796550 Platte River near Venice, Nebr.

Available data for this site

Stream/River Site

LOCATION

Latitude 41°11'53", Longitude 96°20'22" NAD27
Saunders County, Nebraska , Hydrologic Unit 10200202

DESCRIPTION

Datum of gage: 1,090 feet above sea level NAVD88.

AVAILABLE DATA:

Data Type	Begin Date	End Date	Count
Real-time	This is a real-time site		
Daily Data			
Gage height, feet	2004-07-08	2008-01-03	3567
Daily Statistics			
Gage height, feet	2004-10-01	2006-09-30	730
Monthly Statistics			
Gage height, feet	2004-10	2006-09	
Annual Statistics			
Gage height, feet	2005	2006	

OPERATION:

Record for this site is maintained by the USGS Nebraska Water Science Center

Email questions about this site to [Nebraska Water-Data](#)

[Inquiries](#)

[Questions about sites/data?](#)

[Top](#)

[Feedback on this web site](#)

[Explanation of terms](#)

** USGS 06796550 Platte River near Venice, Nebr.

<http://waterdata.usgs.gov/ne/nwis/nwisman?>

Retrieved on 2008-01-04 09:08:38 EST

[Department of the Interior, U.S. Geological Survey](#)

[USGS Water Resources of Nebraska](#)

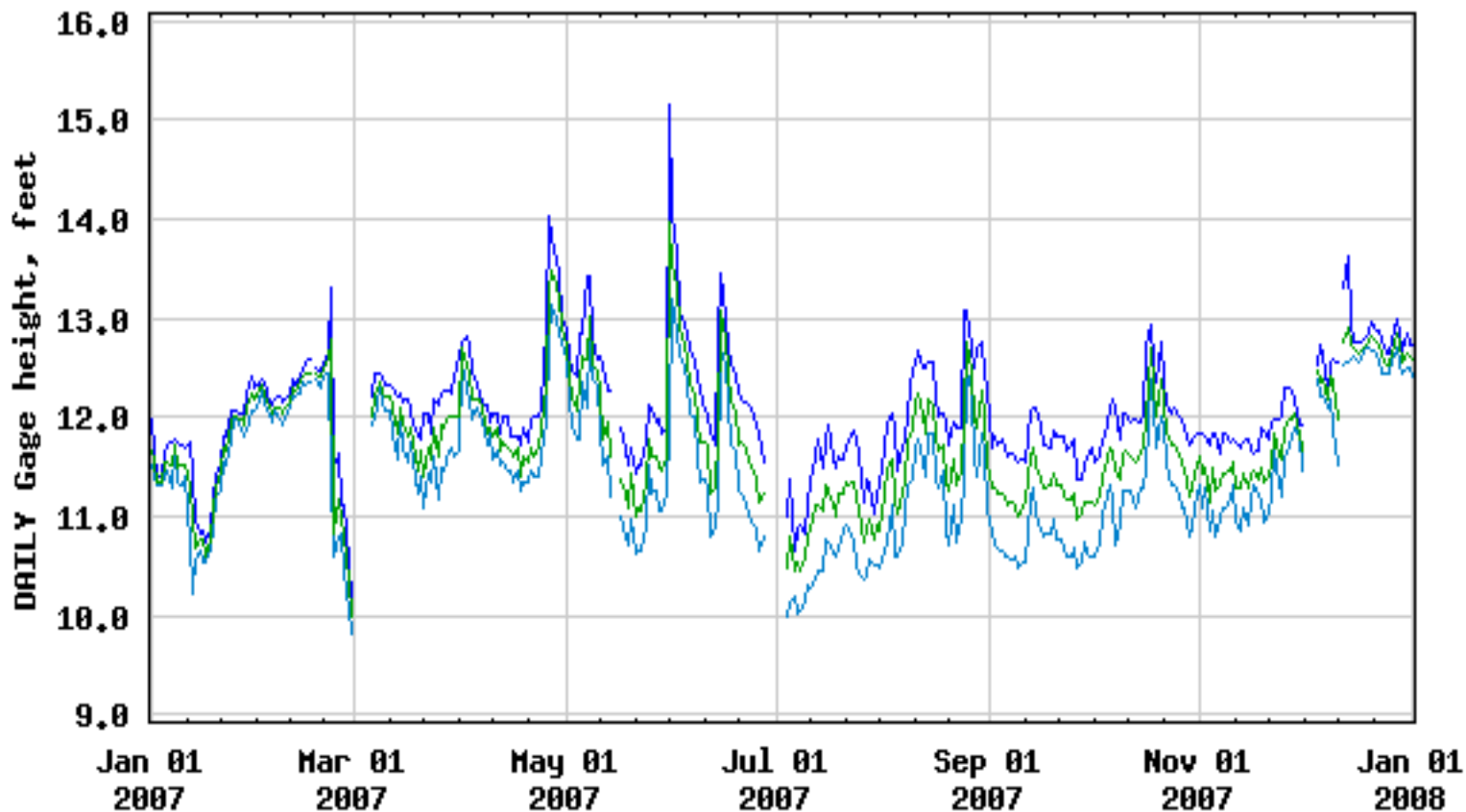
[Privacy Statement](#) || [Disclaimer](#) || [Accessibility](#) || [FOIA](#) || [News](#) || [Automated](#)

[Retrievals](#)

0.97 0.94 ca03



USGS 06796550 Platte River near Venice, Nebr.



---- Provisional Data Subject to Revision ----

— Daily maximum gage height
— Daily minimum gage height

— Daily mean gage height