

APPENDIX III – 2006 HYDROLOGICAL DATA

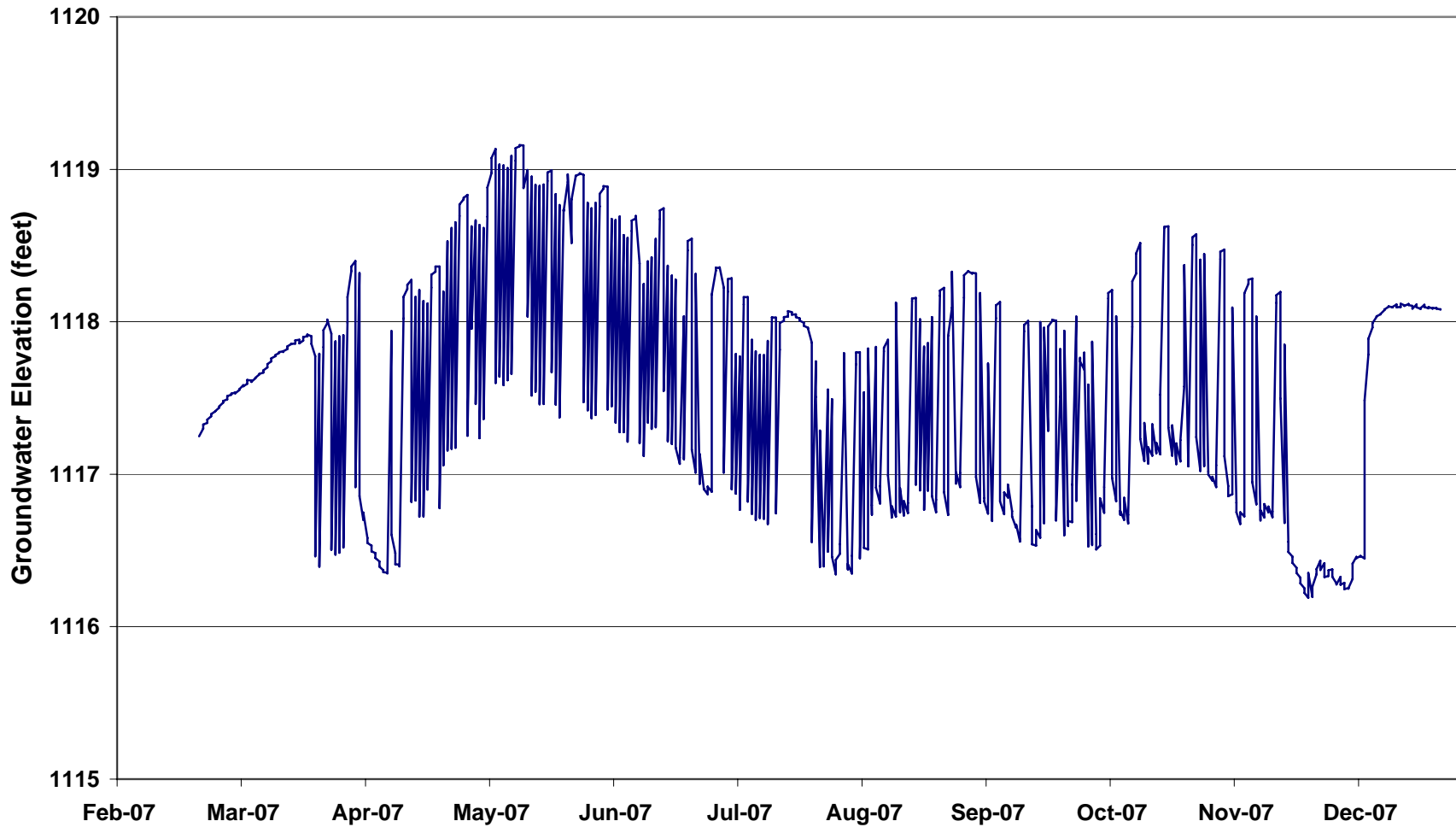
SECTION A – GROUNDWATER MONITORING WELLS DATA

APPENDIX III - SECTION A
GROUNDWATER MONITORING WELLS
TABLE OF CONTENTS

- Figure 1 2007 Monitoring Well Readings for MW90-04 in Douglas County
- Figure 2 2007 Monitoring Well Readings for MW90-05 in Douglas County
- Figure 3 2007 Monitoring Well Readings for MW90-06 in Douglas County
- Figure 4 2007 Monitoring Well Readings for MW90-07 in Douglas County
- Figure 5 2007 Monitoring Well Readings for MW90-10 in Saunders County
- Figure 6 2007 Monitoring Well Readings for MW90-12 in Douglas County
- Figure 7 2007 Monitoring Well Readings for MW90-13 in Douglas County
- Figure 8 2007 Monitoring Well Readings for MW94-01 in Douglas County
- Figure 9 2007 Monitoring Well Readings for MW94-02 in Douglas County
- Figure 10 2007 Monitoring Well Readings for MW94-03 in Saunders County
- Figure 11 2007 Monitoring Well Readings for MW94-04 in Saunders County
- Figure 12 2007 Monitoring Well Readings for MW94-05 in Saunders County
- Figure 13 2007 Monitoring Well Readings for MW94-06 in Saunders County
- Figure 14 2007 Monitoring Well Readings for MW94-07 in Saunders County
- Figure 15 2007 Monitoring Well Readings for MW04-17 in Saunders County
- Figure 16 2007 Monitoring Well Readings for MW05-23 in Saunders County
- Figure 17 2007 Monitoring Well Readings for MW05-24 in Douglas County
- Figure 18 2007 Monitoring Well Readings for MW05-25 in Douglas County
- Figure 19 2007 Monitoring Well Readings for MW05-26 in Douglas County

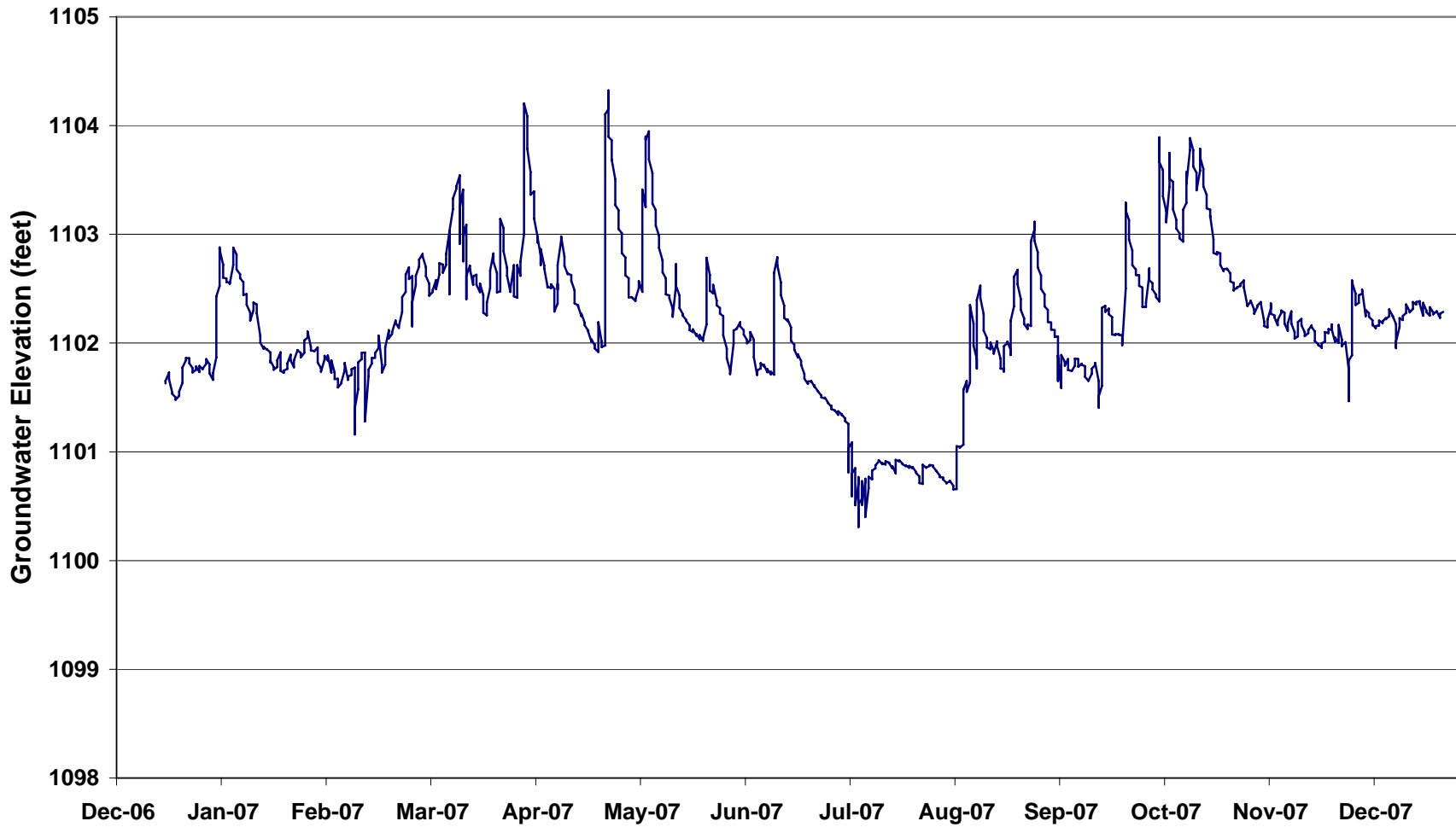
Figure 20 2007 Monitoring Well Readings for MW06-29 in Douglas County

Figure 1 Monitoring Well Readings for MW 90-04 in Douglas County
(February 21, 2007 thru December 28, 2007)



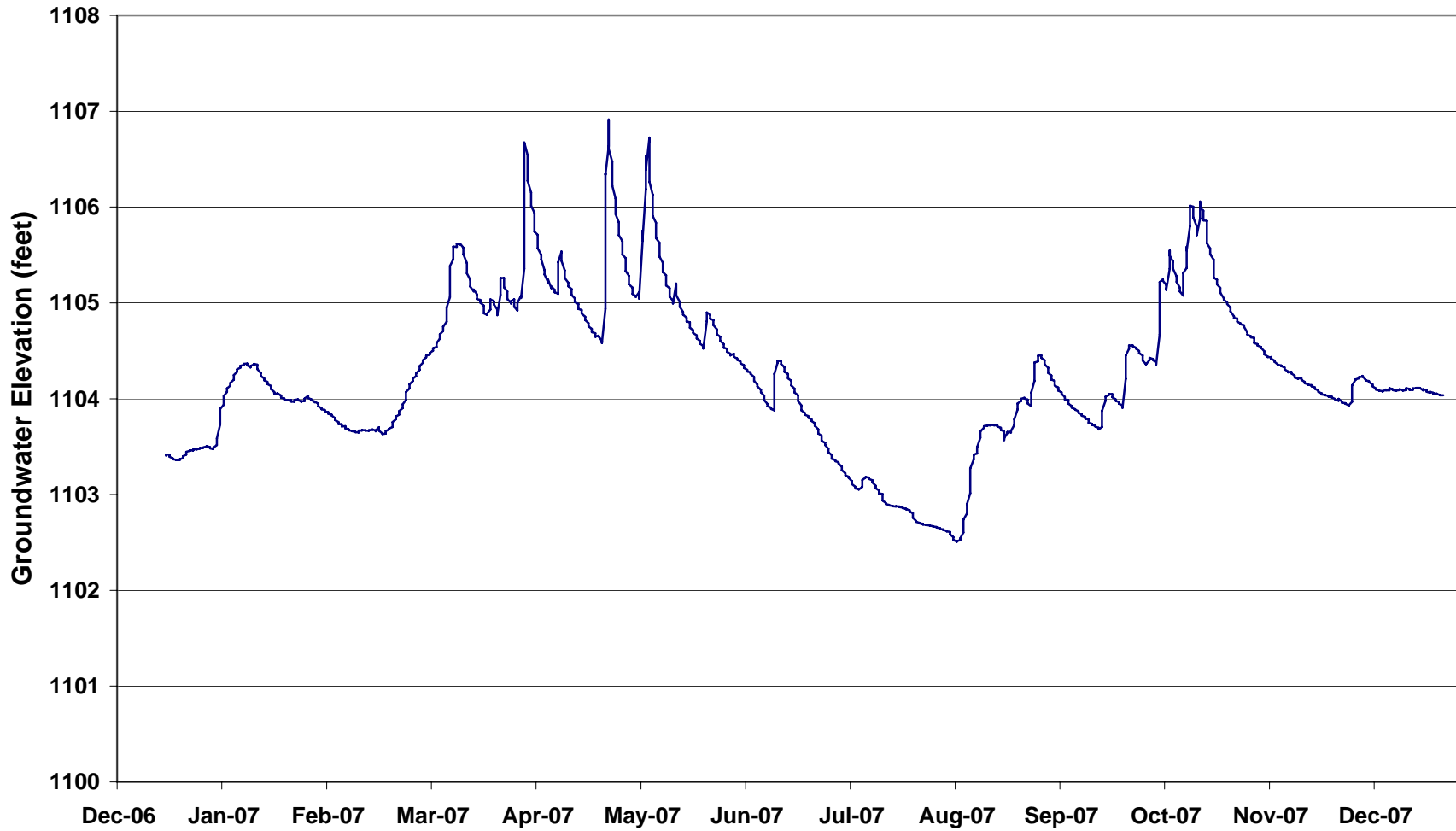
Note: Data obtained from Metropolitan Utilities District, Omaha, Nebraska

Figure 2 Monitoring Well Readings for MW 90-05 in Douglas County
(December 15, 2006 thru December 28, 2007)



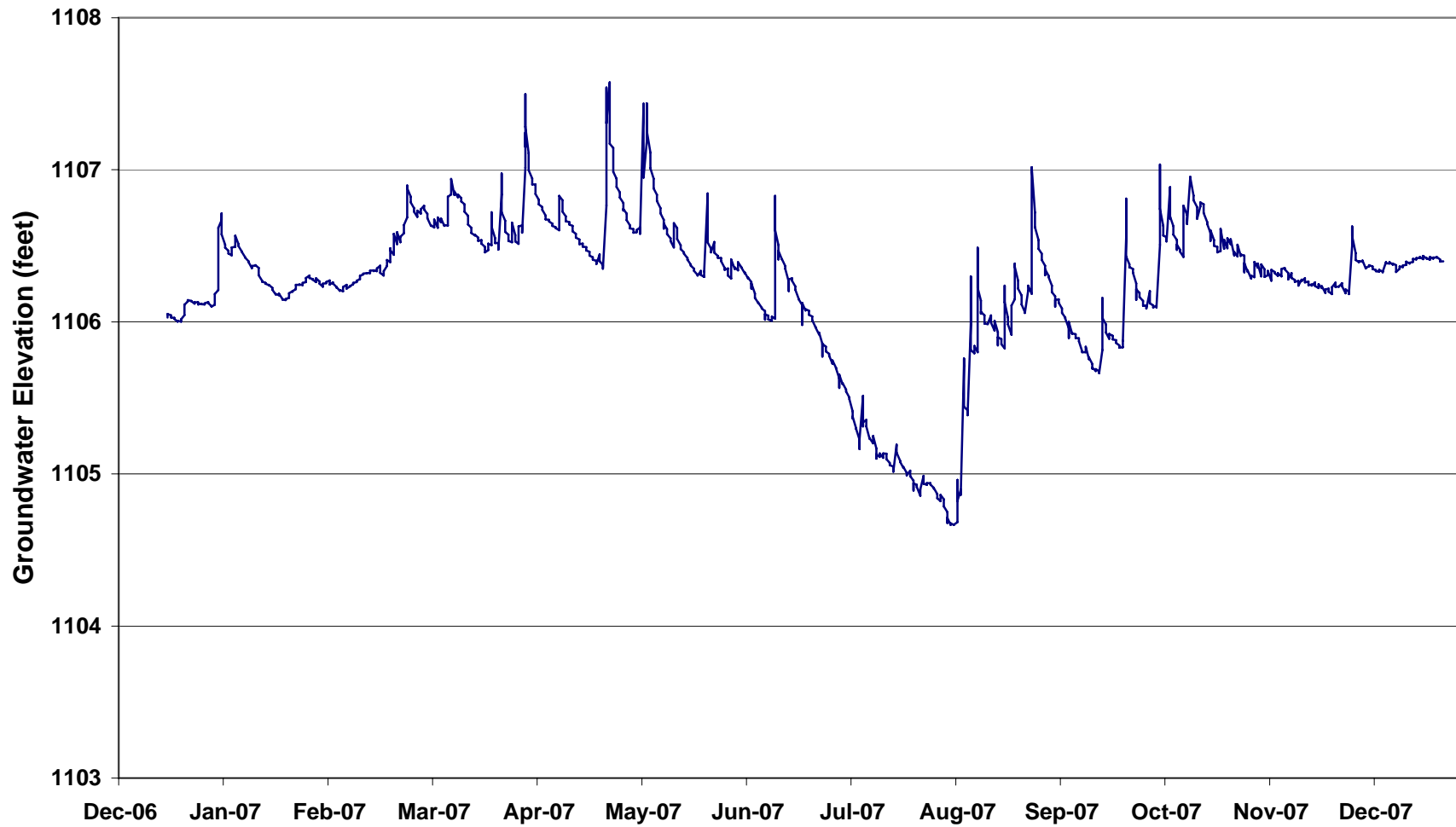
Note: Data obtained from Metropolitan Utilities District, Omaha, Nebraska

Figure 3 Monitoring Well Readings for MW 90-06 in Douglas County
(December 15, 2006 thru December 28, 2007)



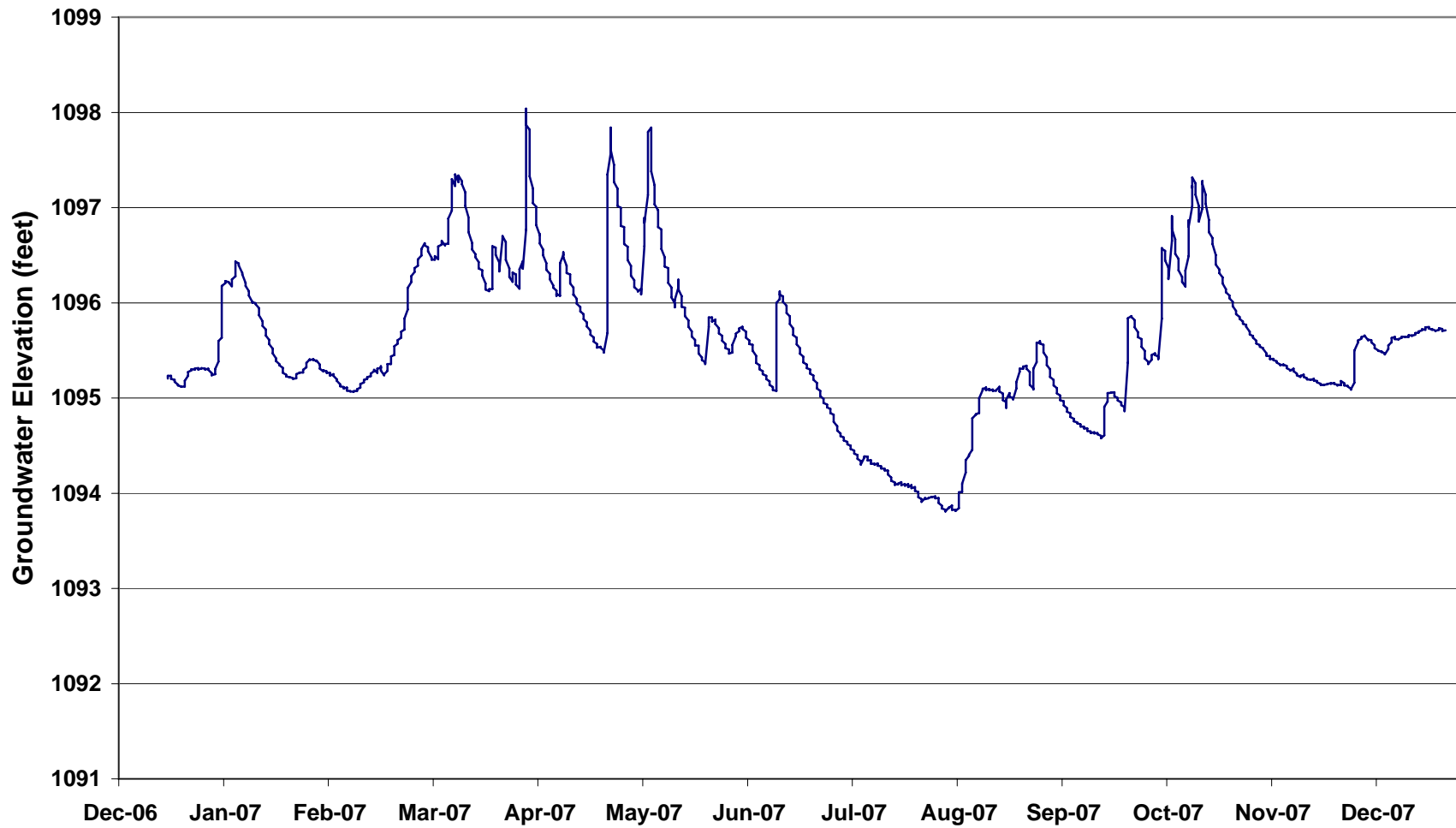
Note: Data obtained from Metropolitan Utilities District, Omaha, Nebraska

Figure 4 Monitoring Well Readings for MW 90-07 in Douglas County
(December 15, 2006 thru December 28, 2007)



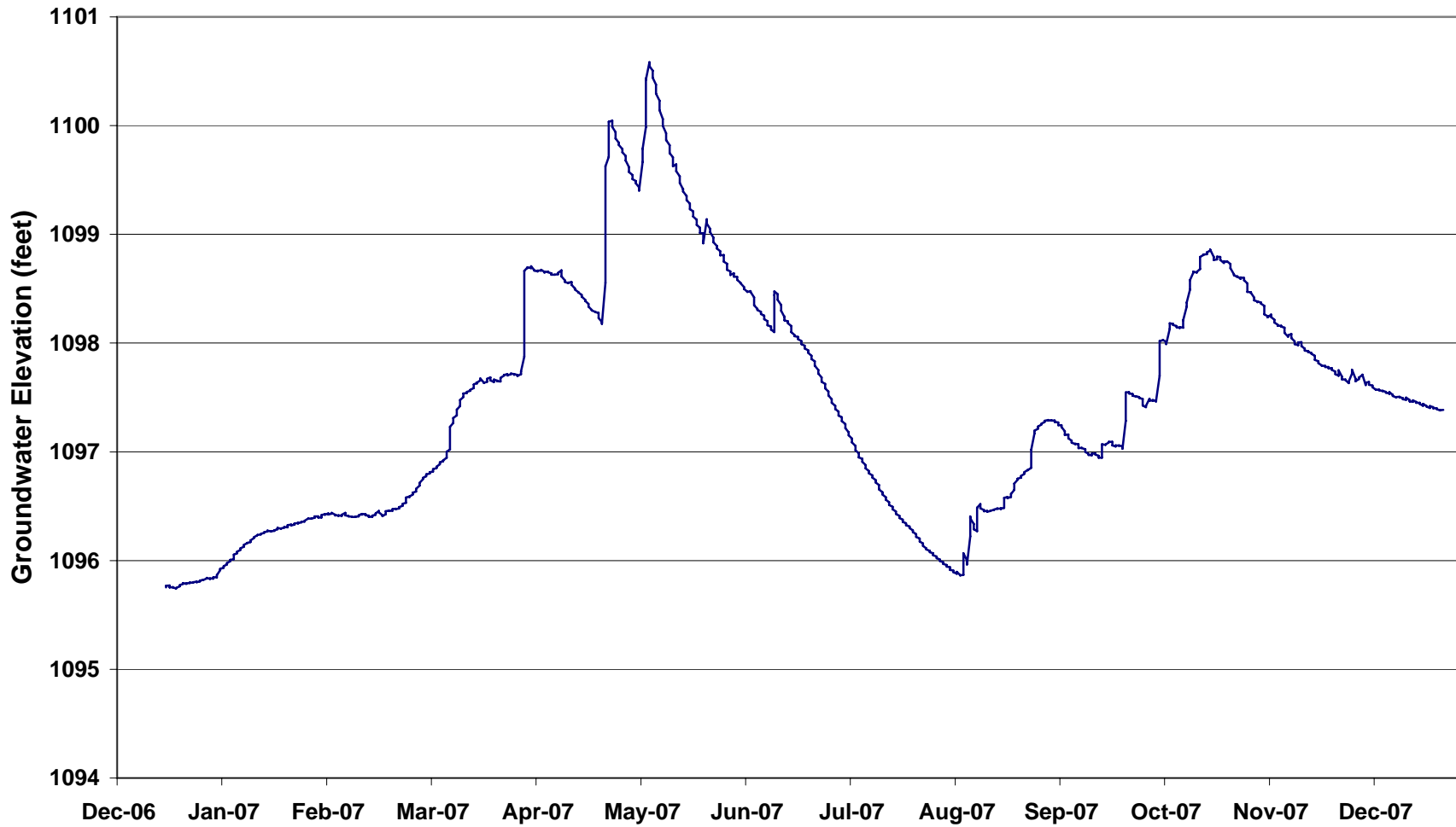
Note: Data obtained from Metropolitan Utilities District, Omaha, Nebraska

Figure 5 Monitoring Well Readings for MW 90-10 in Saunders County
(December 15, 2006 thru December 28, 2007)



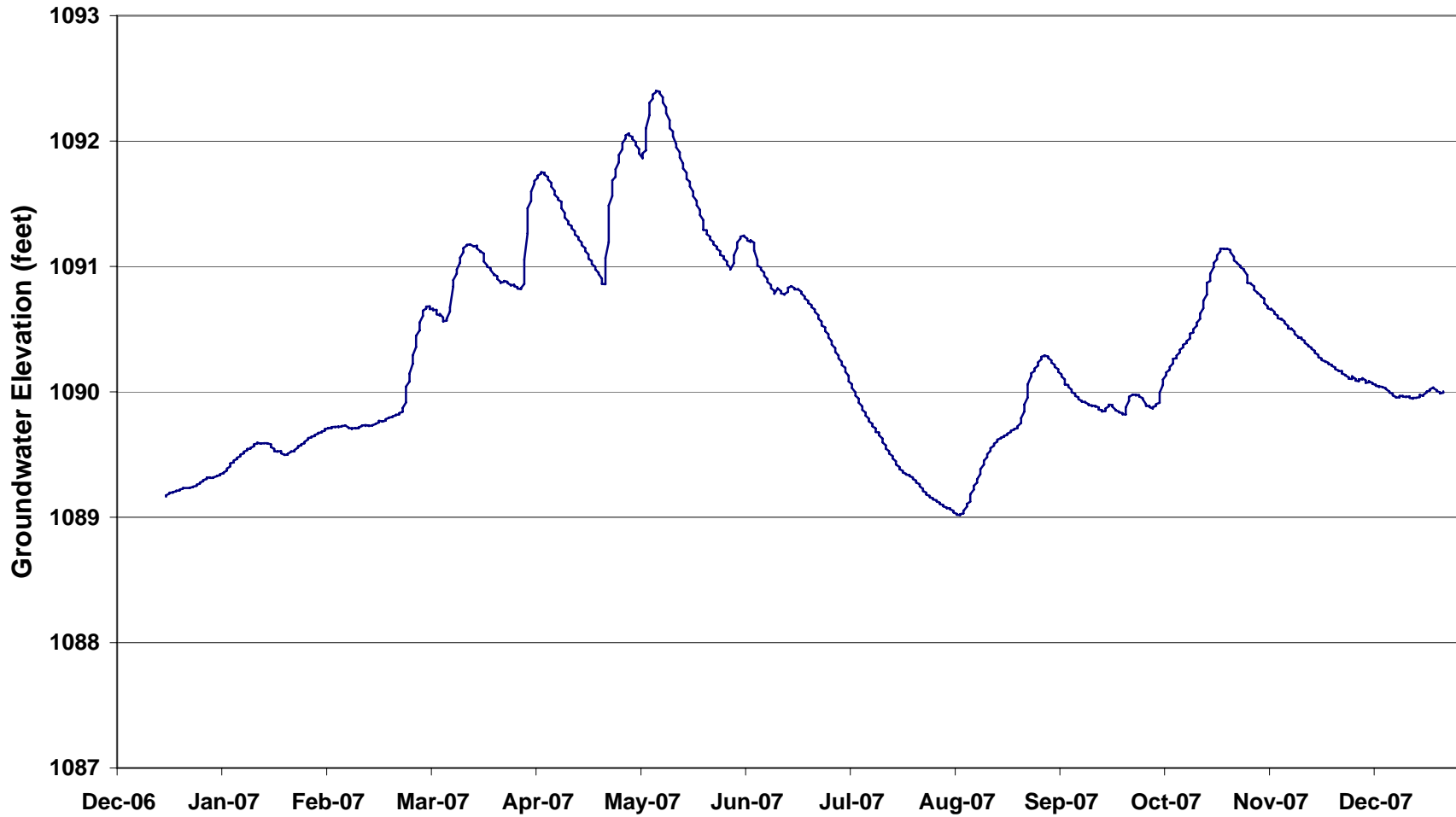
Note: Data obtained from Metropolitan Utilities District, Omaha, Nebraska

Figure 6 Monitoring Well Readings for MW 90-12 in Douglas County
(December 15, 2006 thru December 28, 2007)



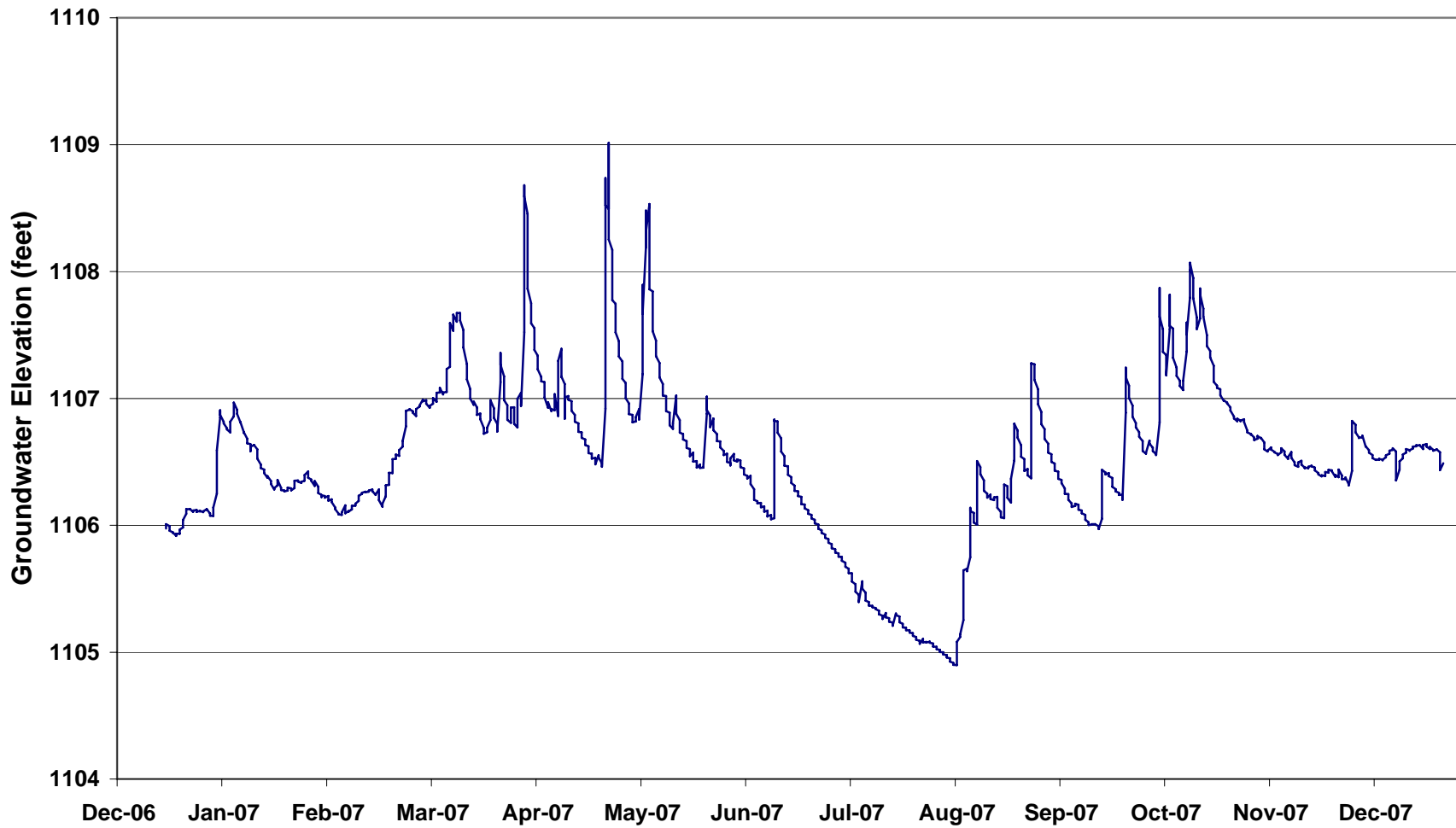
Note: Data obtained from Metropolitan Utilities District, Omaha, Nebraska

Figure 7 Monitoring Well Readings for MW 90-13 in Douglas County
(December 15, 2006 thru December 28, 2007)



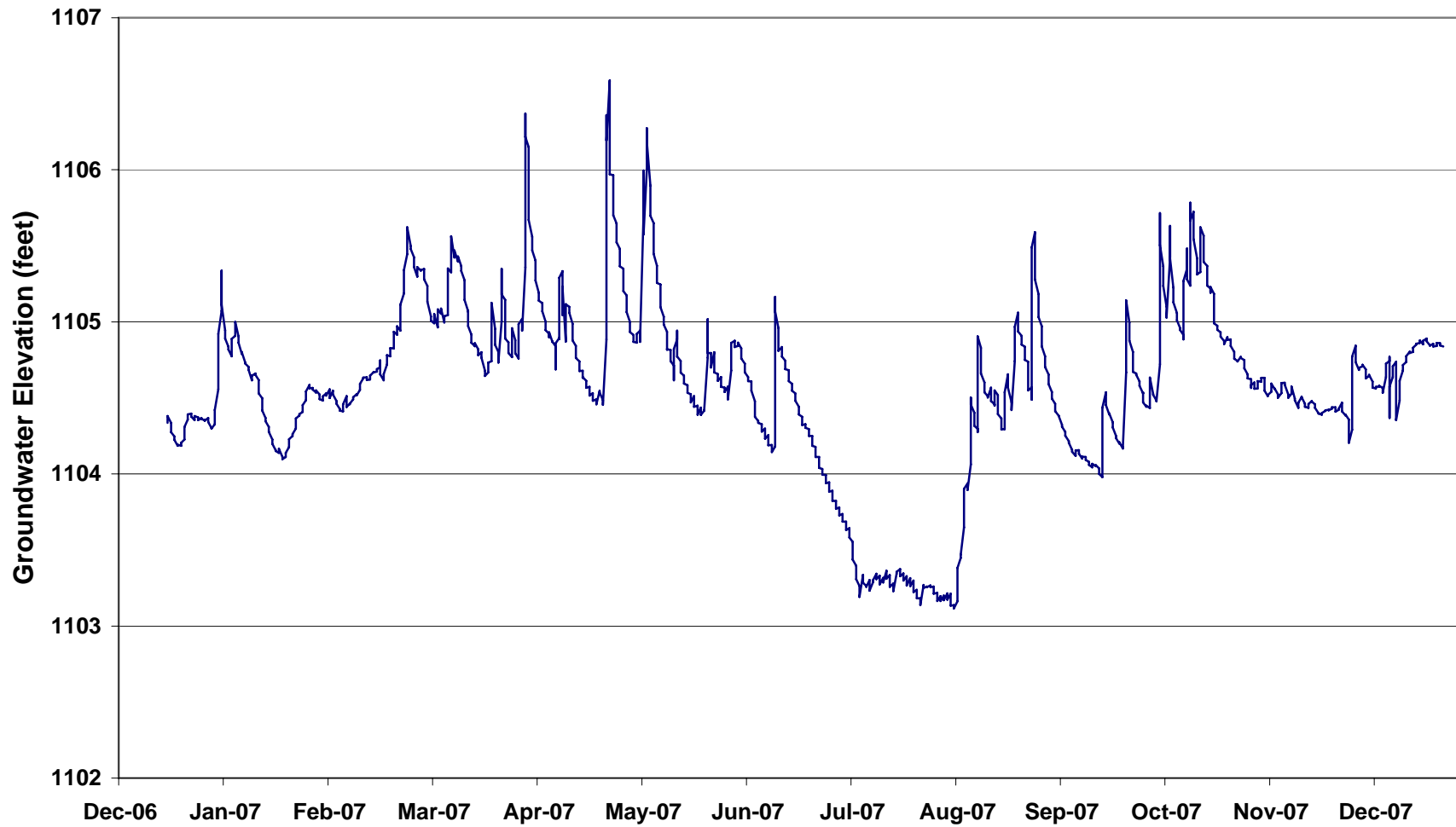
Note: Data obtained from Metropolitan Utilities District, Omaha, Nebraska

Figure 8 Monitoring Well Readings for MW 94-01 in Douglas County
(December 15, 2006 thru December 28, 2007)



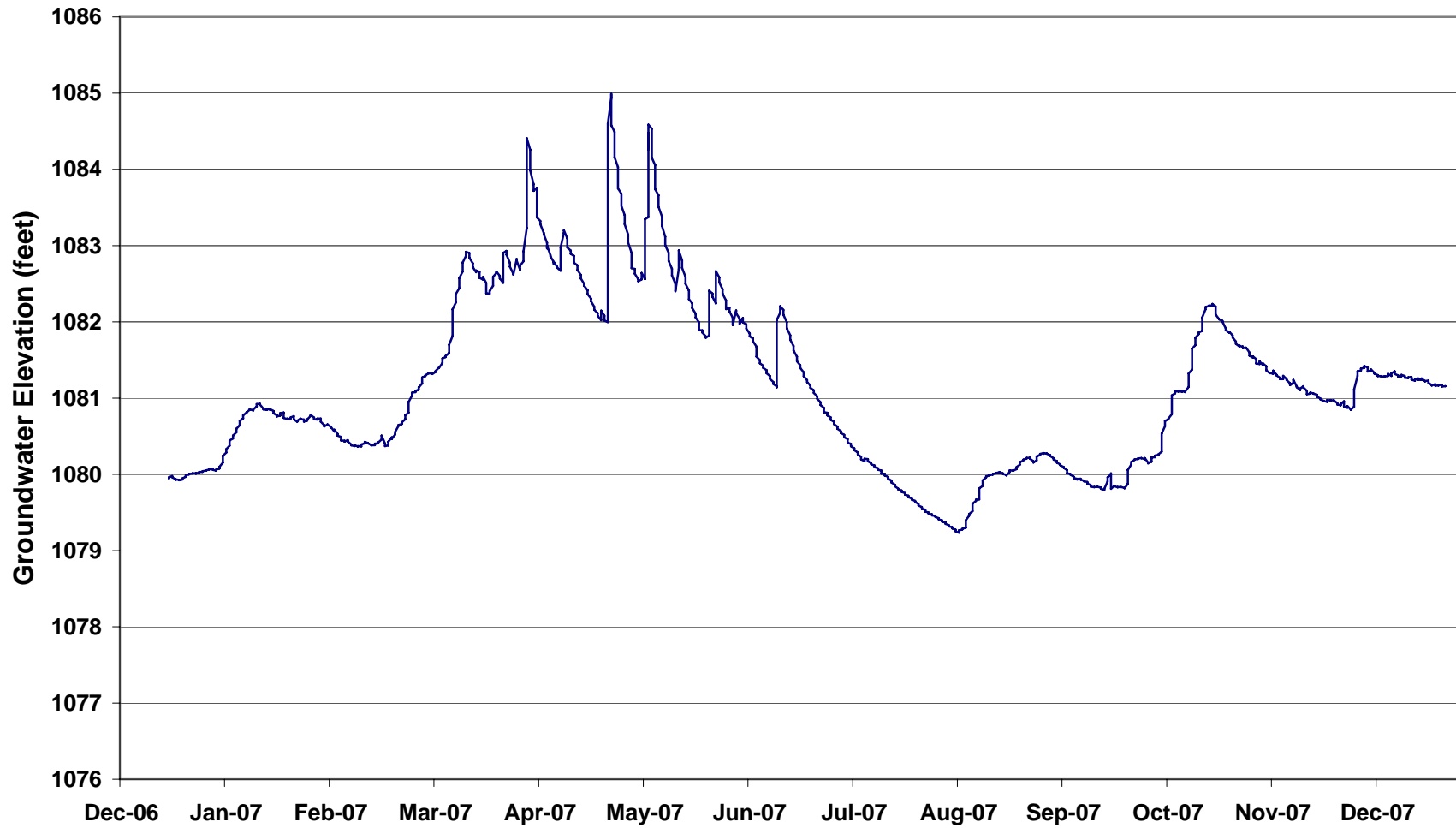
Note: Data obtained from Metropolitan Utilities District, Omaha, Nebraska

Figure 9 Monitoring Well Readings for MW 94-02 in Douglas County
(December 15, 2006 thru December 28, 2007)



Note: Data obtained from Metropolitan Utilities District, Omaha, Nebraska

Figure 10 Monitoring Well Readings for MW 94-03 in Saunders County
(December 15, 2006 thru December 28, 2007)



Note: Data obtained from Metropolitan Utilities District, Omaha, Nebraska

Figure 11 Monitoring Well Readings for MW 94-04 in Saunders County
(December 15, 2006 thru December 28, 2007)



Note: Data obtained from Metropolitan Utilities District, Omaha, Nebraska

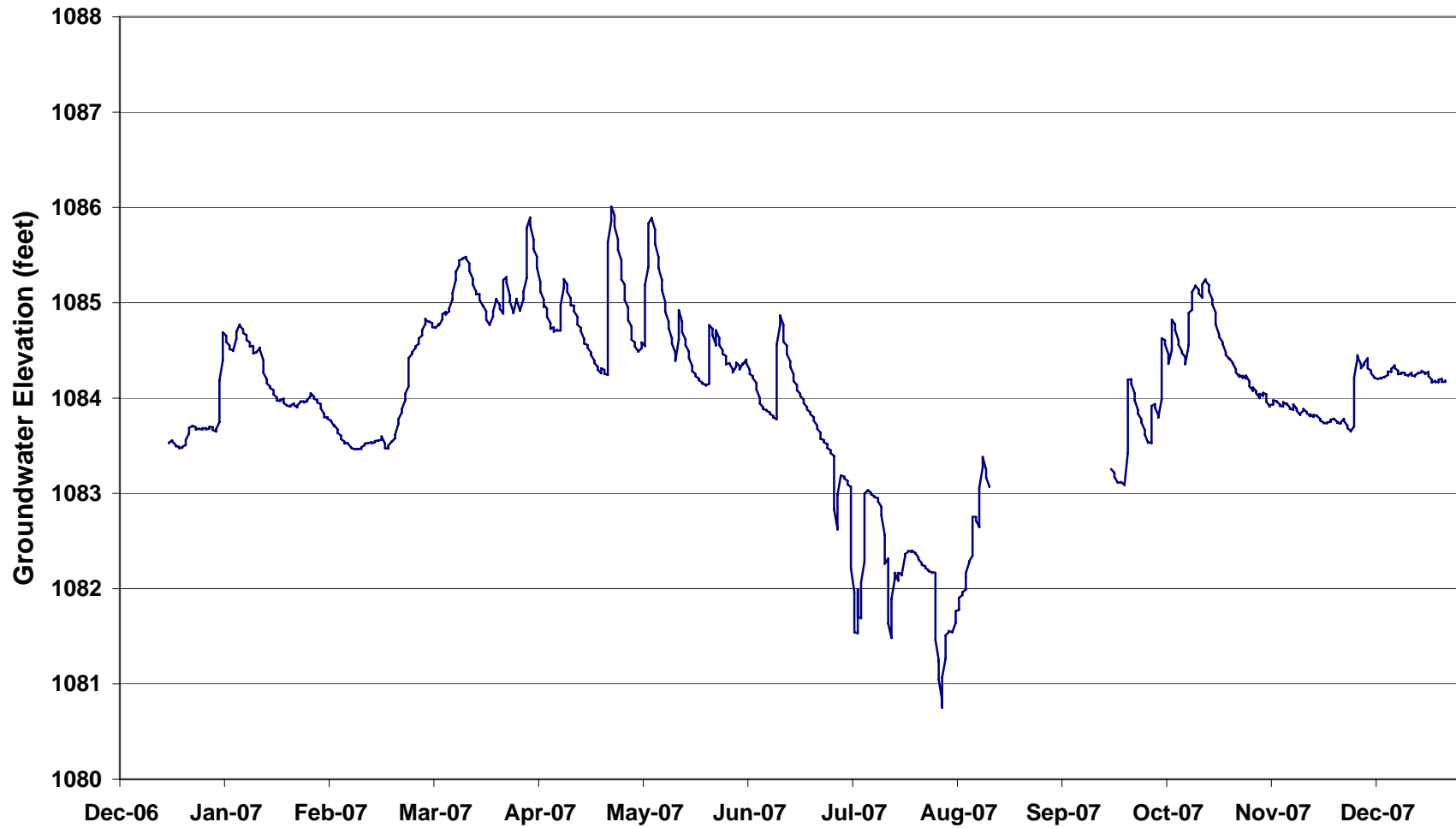
[Gap in data caused by battery failure.]

Figure 12 Monitoring Well Readings for MW 94-05 in Saunders County
(December 15, 2006 thru December 28, 2007)



Note: Data obtained from Metropolitan Utilities District, Omaha, Nebraska

Figure 13 Monitoring Well Readings for MW 94-06 in Saunders County
(December 15, 2006 thru December 28, 2007)



Note: Data obtained from Metropolitan Utilities District, Omaha, Nebraska

Figure 14 Monitoring Well Readings for MW 94-07 in Saunders County
(December 15, 2006 thru December 28, 2007)



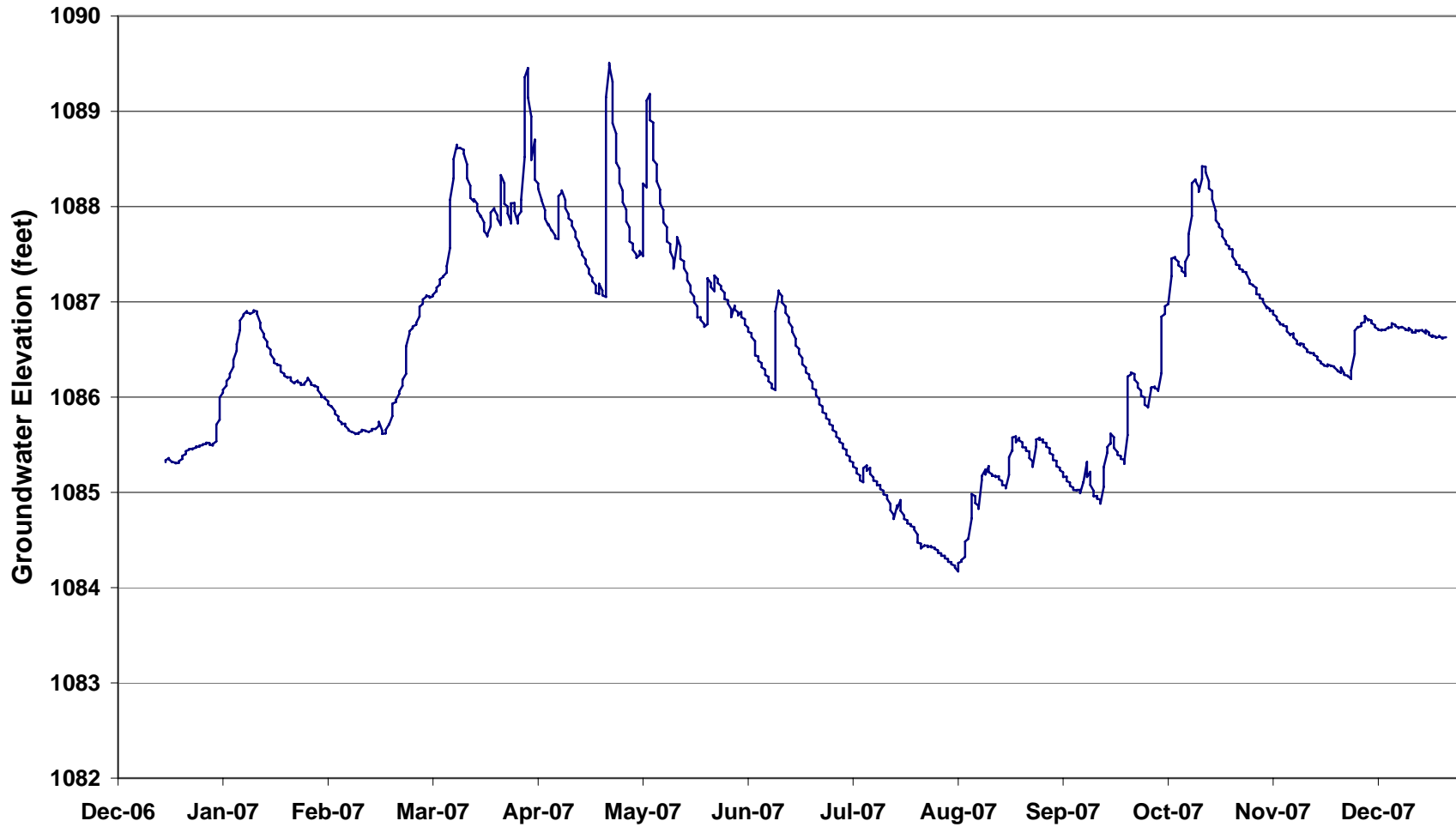
Note: Data obtained from Metropolitan Utilities District, Omaha, Nebraska

Figure 15 Monitoring Well Readings for MW 04-17 in Saunders County
(December 15, 2006 thru December 28, 2007)



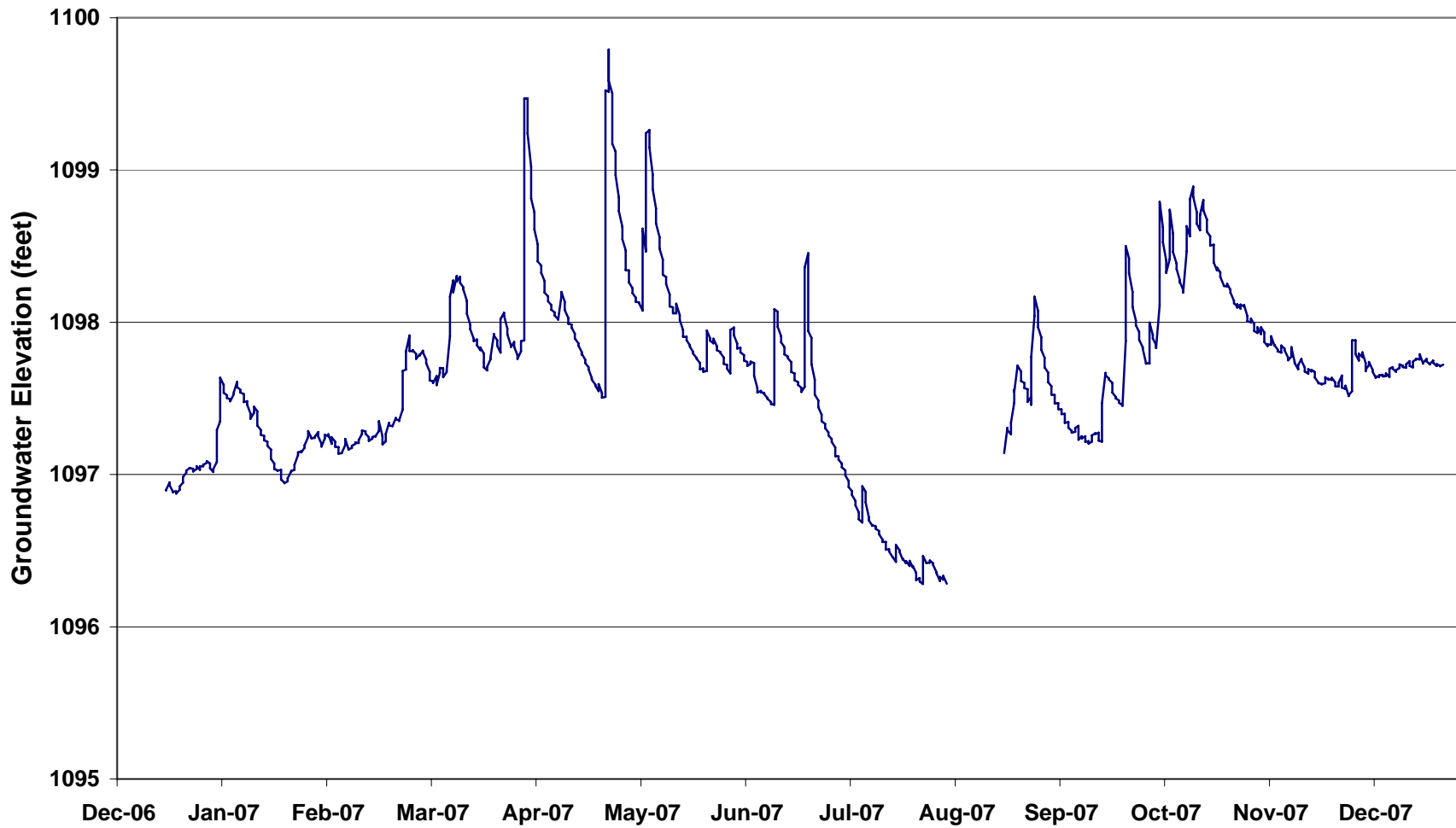
Note: Data obtained from Metropolitan Utilities District, Omaha, Nebraska

Figure 16 Monitor Well Readings for MW 05-23 in Saunders Country
(December 15, 2006 thru December 28, 2007)



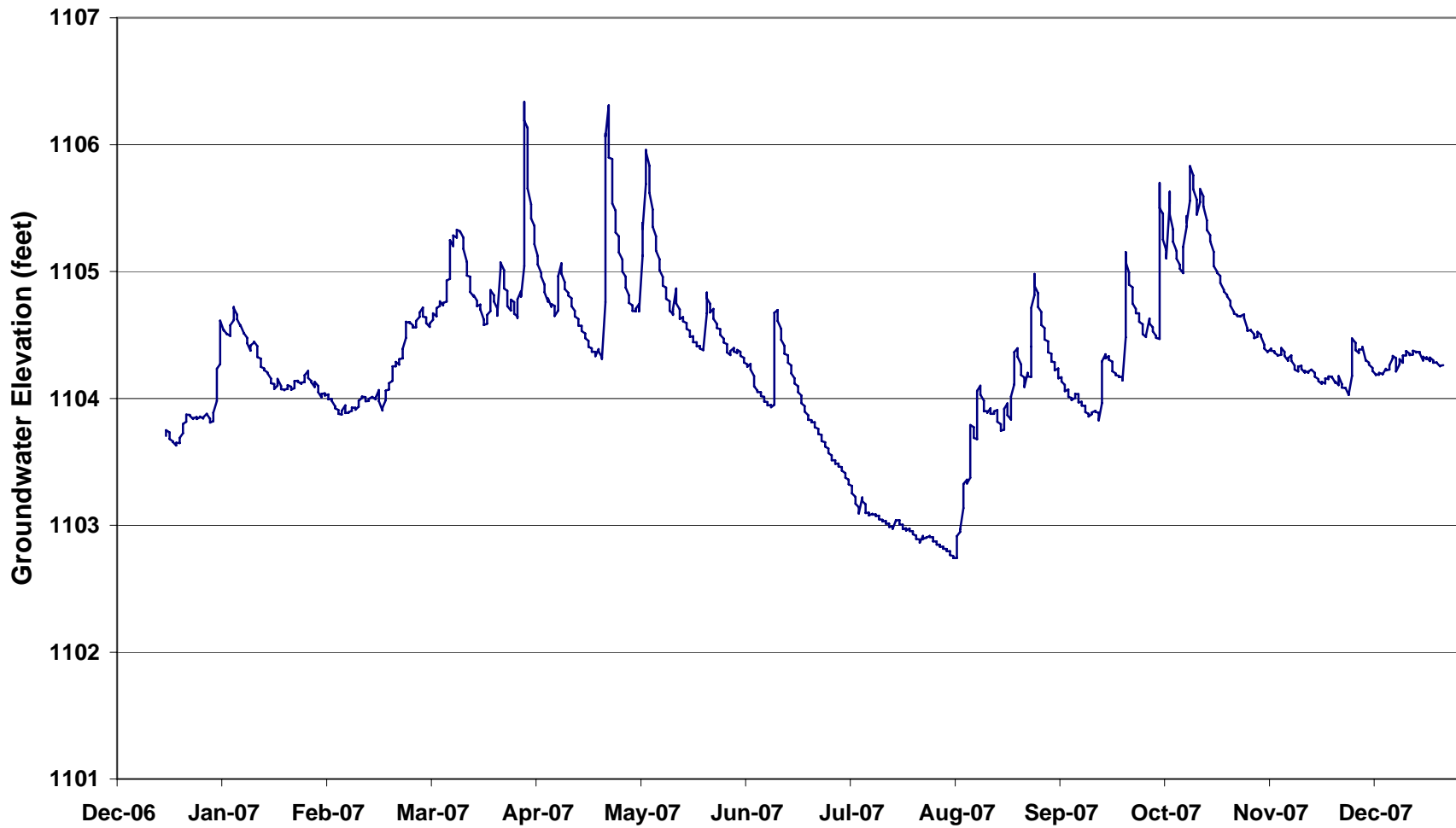
Note: Data obtained from Metropolitan Utilities District, Omaha, Nebraska

Figure 17 Monitoring Well Readings for MW 05-24 in Douglas County
(December 15, 2006 thru December 28, 2007)



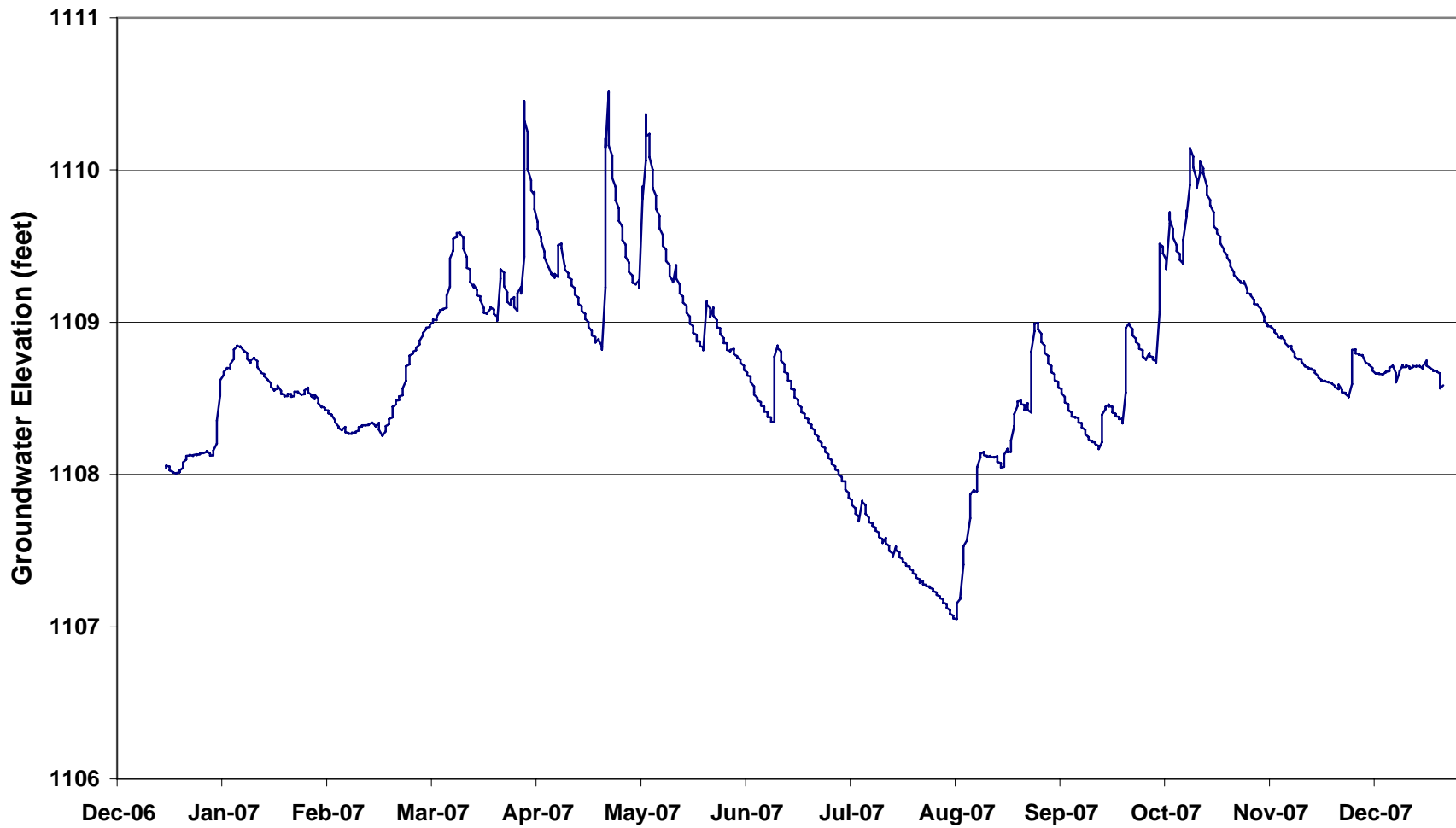
Note: Data obtained from Metropolitan Utilities District, Omaha, Nebraska

Figure 18 Monitoring Well Readings for MW 05-25 in Douglas County
(December 15, 2006 thru December 28, 2007)



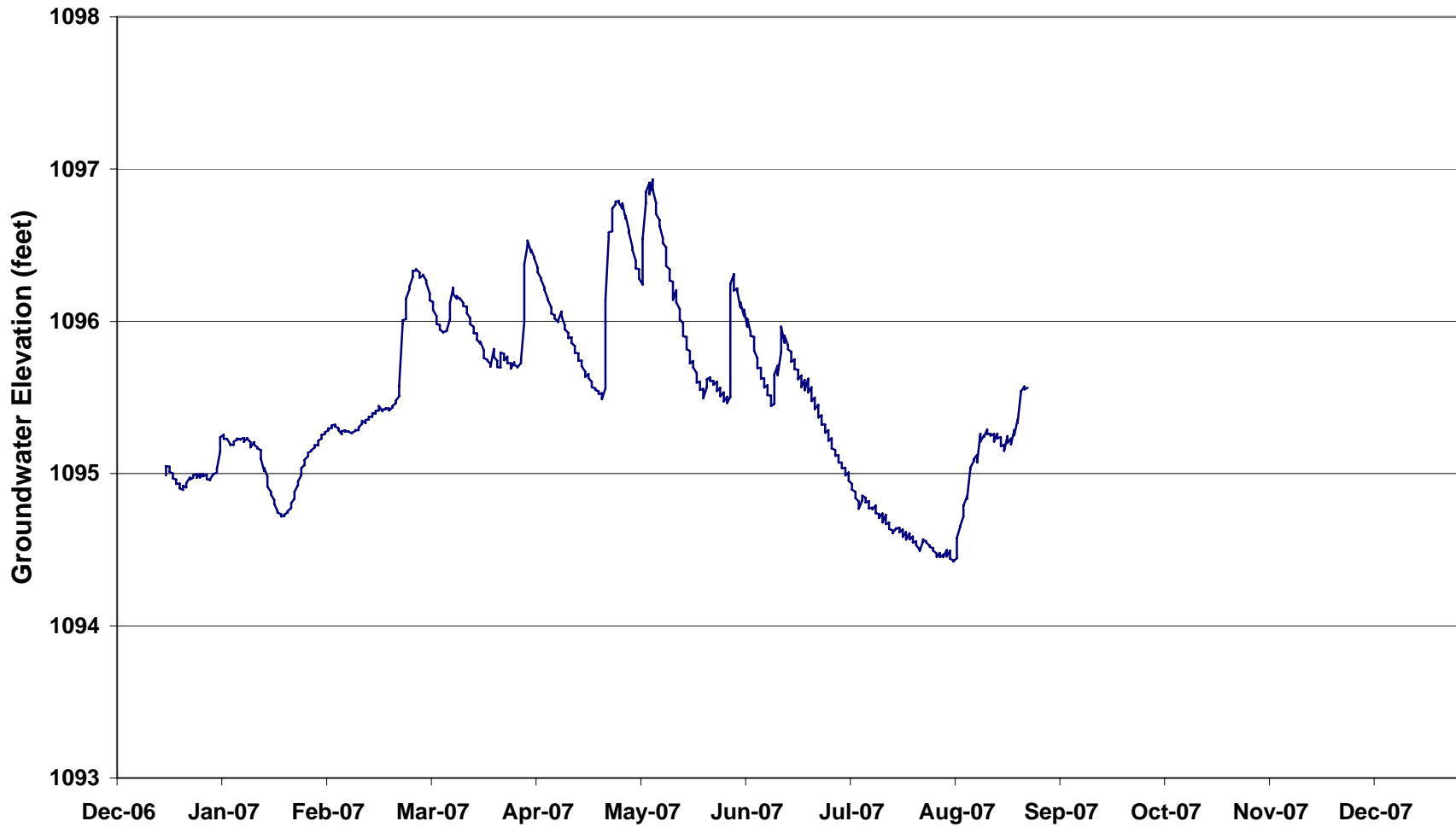
Note: Data obtained from Metropolitan Utilities District, Omaha, Nebraska

Figure 19 Monitoring Well Readings for MW 05-26 in Douglas County
(December 15, 2006 thru December 28, 2007)



Note: Data obtained from Metropolitan Utilities District, Omaha, Nebraska

Figure 20 Monitoring Well Readings for MW 06-29 in Douglas County
(December 15, 2006 thru December 28, 2007)

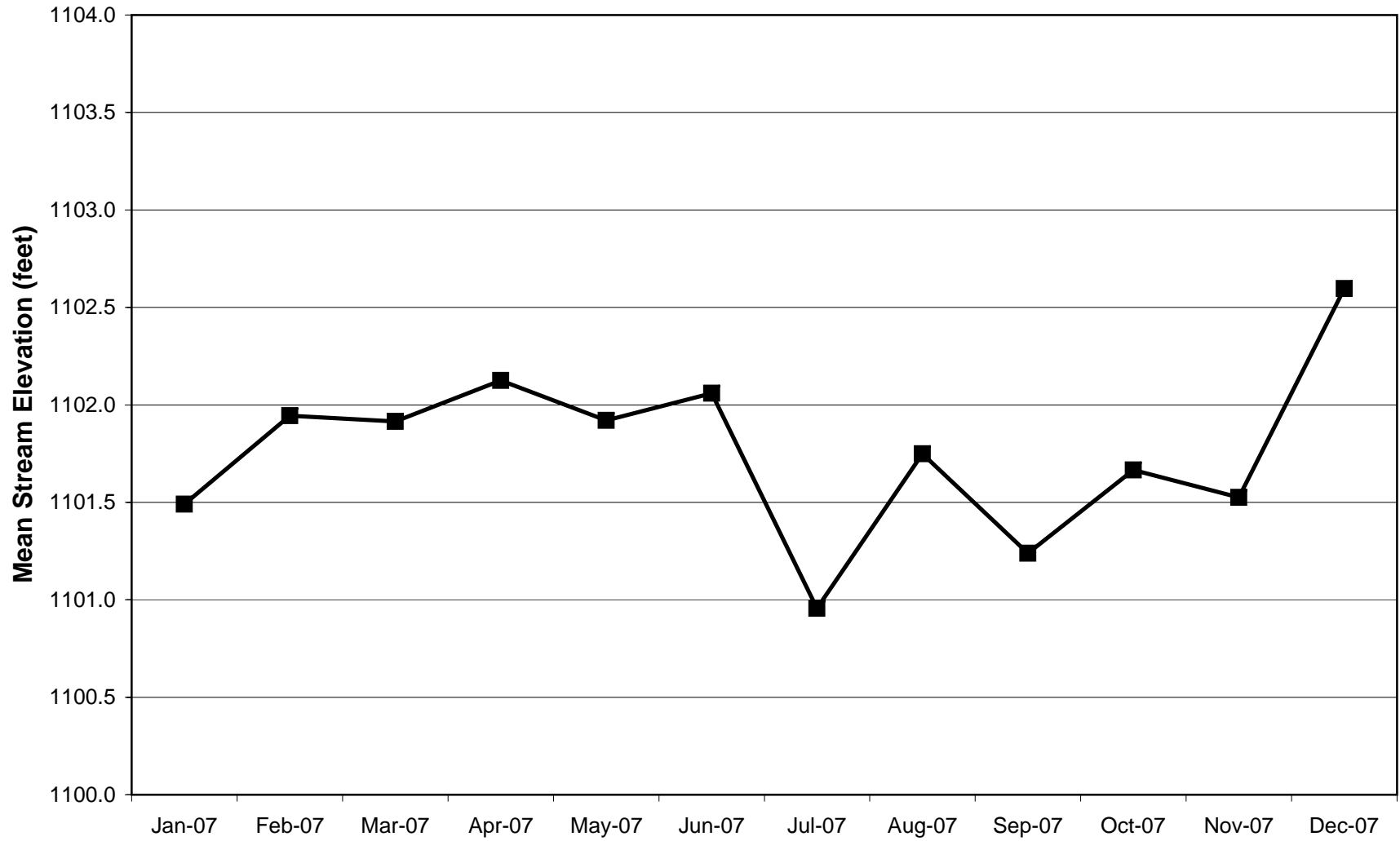


Note: Data obtained from Metropolitan Utilities District, Omaha, Nebraska

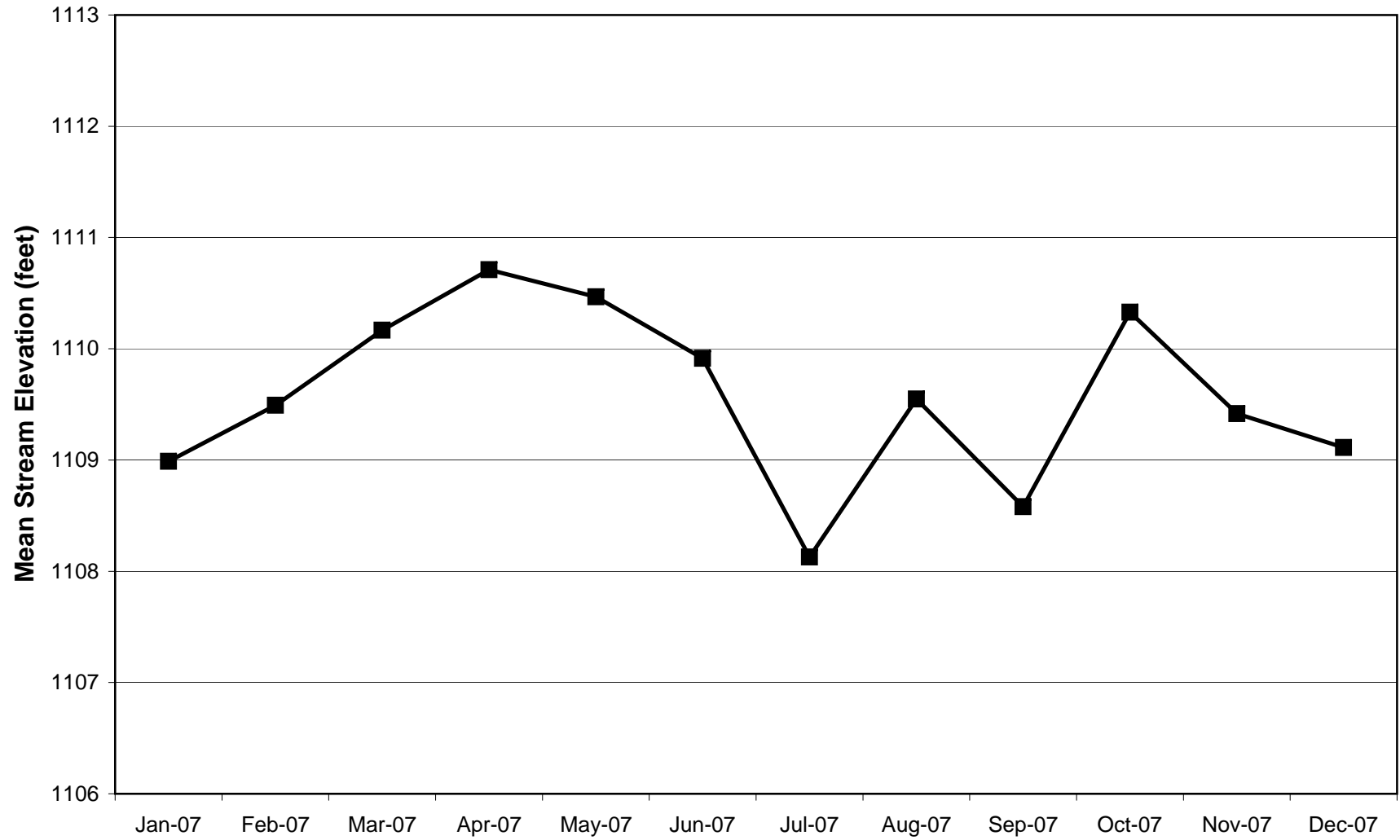
[Gap in data caused by equipment failure.]

SECTION B – STREAM GAUGE DATA

**Figure 1 2007 Monthly Mean Stream Elevation
of the Platte River near Venice, NE**

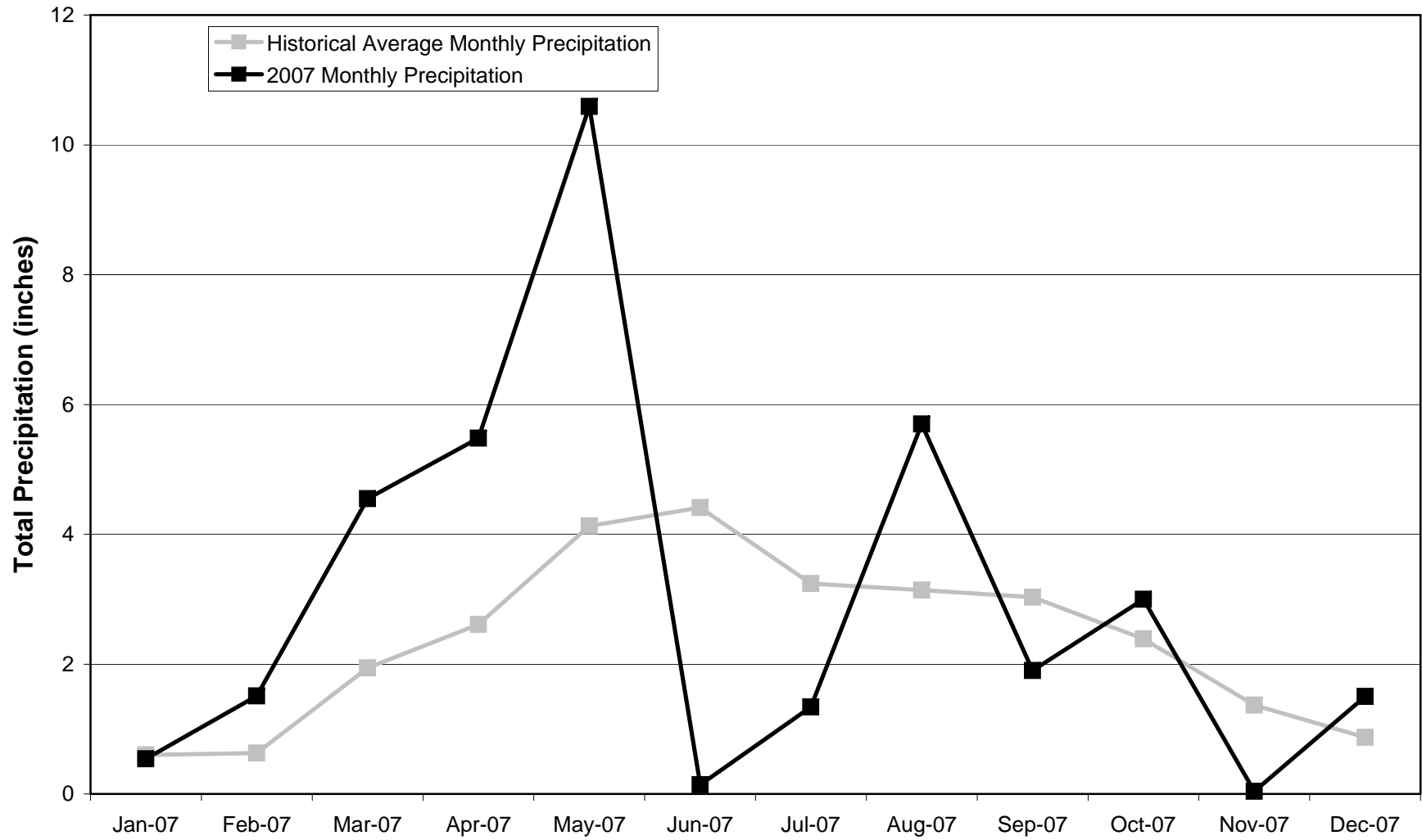


**Figure 2 2007 Monthly Mean Stream Elevation
of the Elkhorn River at Waterloo, NE**



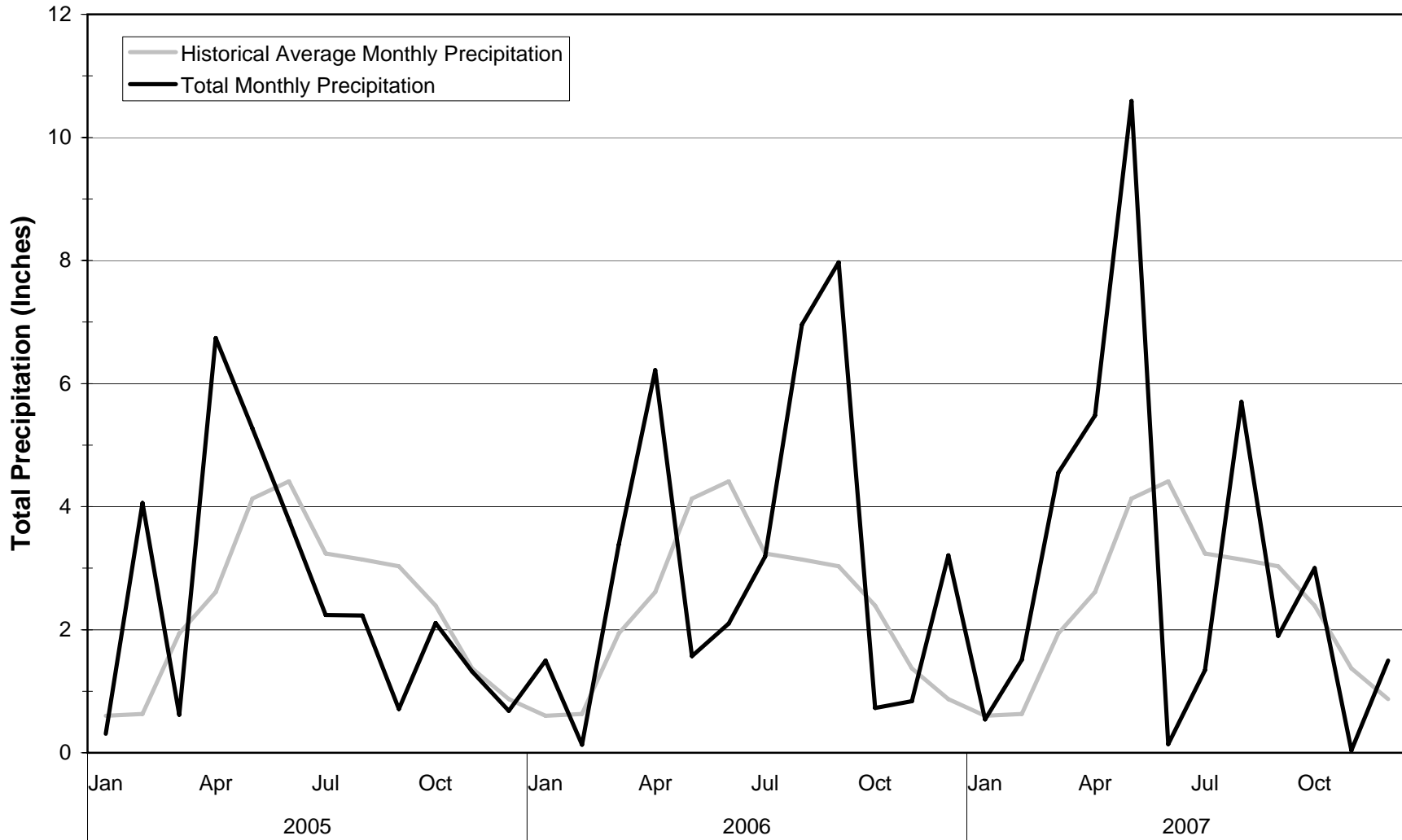
SECTION C – PRECIPITATION DATA

**Figure 1 2007 Total Monthly Precipitation
Fremont Municipal Airport - Fremont, NE**



Note: Data obtained from Weather Underground and the National Weather Service.

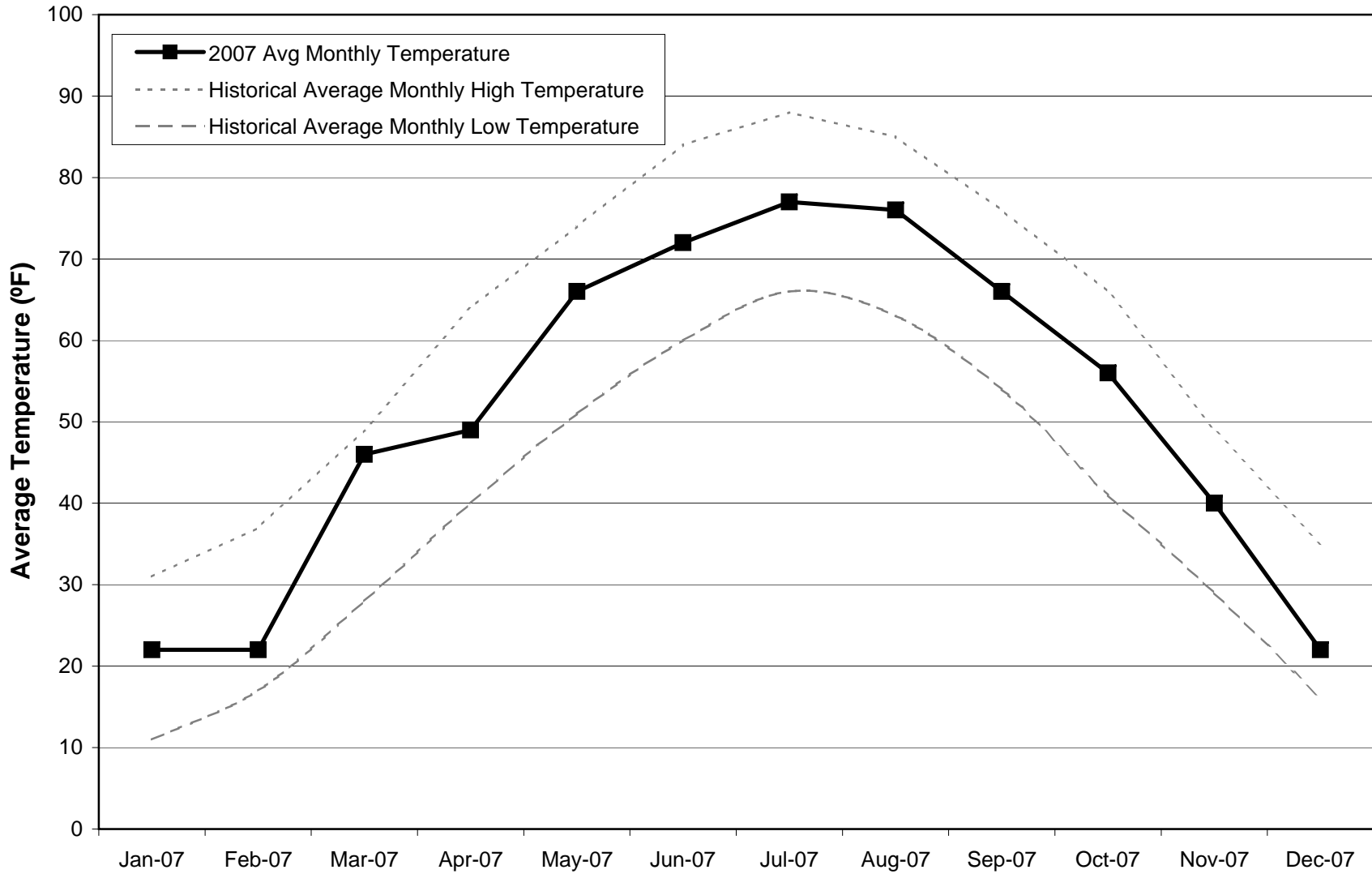
**Figure 2 2005-2007 Total Monthly Precipitation
Fremont Municipal Airport - Fremont, NE**



Note: Data obtained from Weather Underground and the National Weather Service.

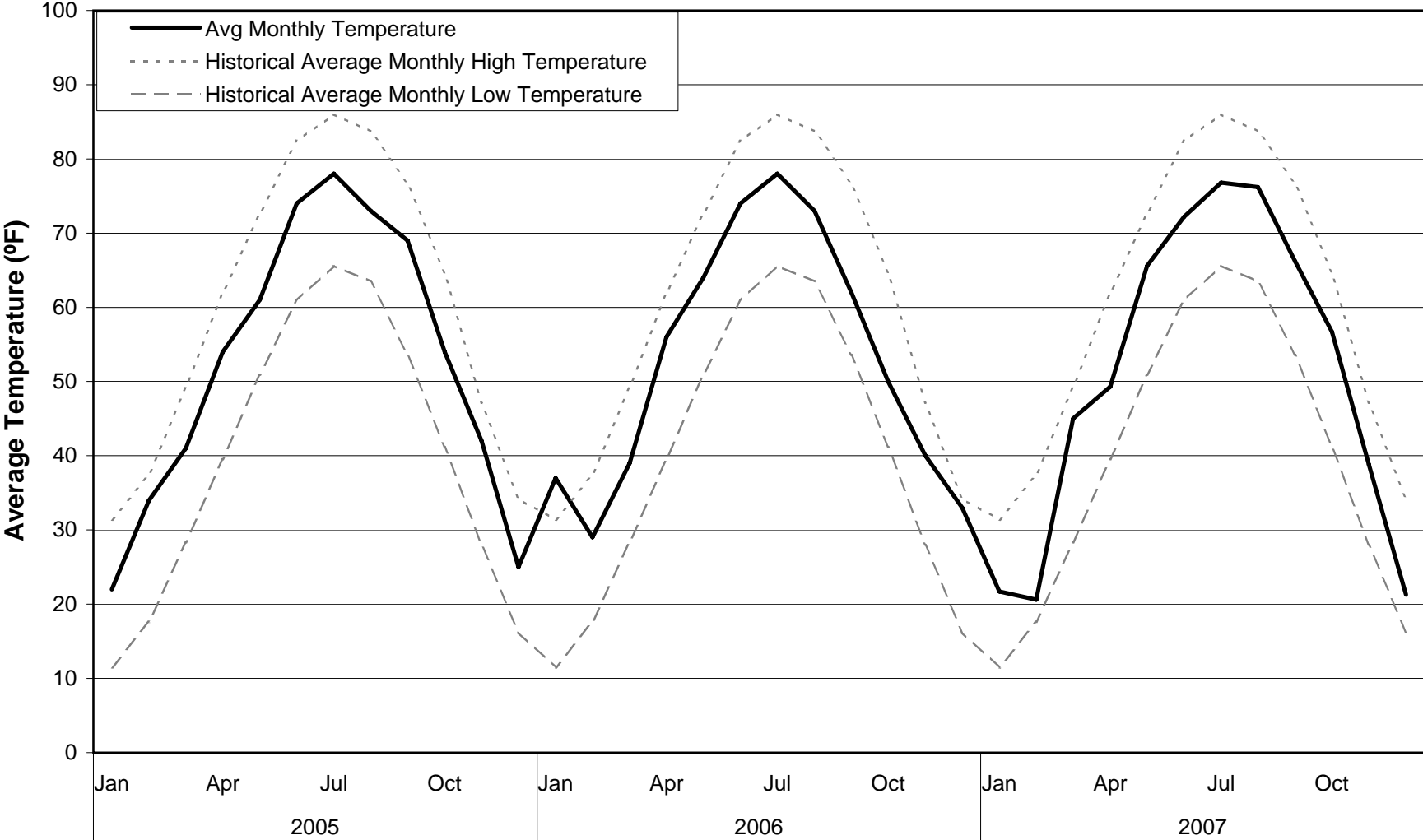
SECTION D – AMBIENT TEMPERATURE DATA

**Figure 1 2007 Monthly Average Ambient Air Temperature
Fremont Municipal Airport - Fremont, NE**



Note: Data obtained from Weather Underground and the National Weather Service.

**Figure 2 2005-2007 Average Ambient Air Temperature
Fremont Municipal Airport - Fremont, NE**



Note: Data obtained from Weather Underground and the National Weather Service.