

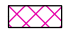



Legend

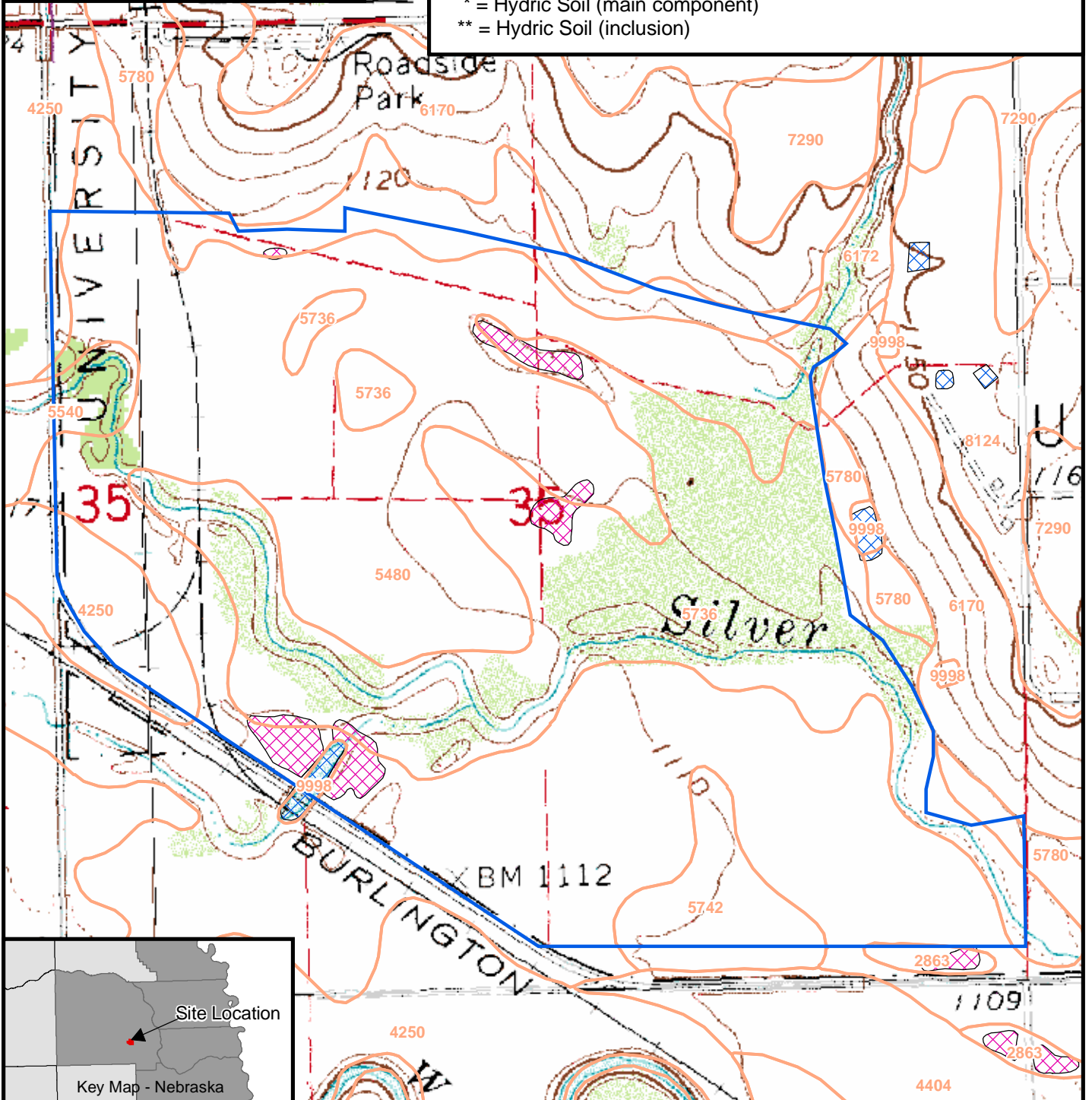
-  Approximate Mitigation Site Location
-  SSURGO Soil Types

National Wetland Inventory

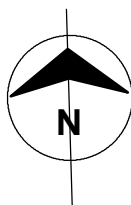
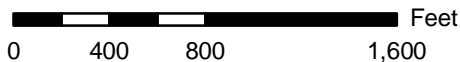
-  PEMA; PEMC
-  PUBFx

Key to Soil Types

- 2863* - Fluvaquents, silty, frequently flooded
- 4250** - Kenridge silty clay loam, 0-2% slopes, occasionally flooded
- 5480 - Muscotah silty clay loam, 0-1% slopes, occasionally flooded
- 5736* - Obert silty clay loam, 0-2% slopes, wet, frequently flooded
- 5742* - Obert silty clay loam, 0-2% slopes, occasionally flooded
- 5780 - Olmitz loam, 2-5% slopes
- 6170 - Pohocco-Pahuk complex, 5-11% slopes, eroded
- * = Hydric Soil (main component)
- ** = Hydric Soil (inclusion)



Copyright © 2006 Burns & McDonnell Engineering Co., Inc. Revision: November 29, 2006



Source: USGS 7.5-Minute Quads for Mead & Wahoo East, NE; USFWS NWI Data & USDA NRCS Soil Survey Geographic (SSURGO) Data

Figure 4-15
Topographic Map, Soil Survey,
and NWI Map of the
ARDC Mitigation Site
Metropolitan Utilities District