

DG-09

BATHYMETRIC MONITORING DATA

DG-09 TABLE OF CONTENTS

DG-09-1 FIGURES

Figure 1 Bathymetric Contours and Locations of the Staff Gauge and Permanent Benchmark at Pond DG-09

Figure 2 2006 Water Level Elevations for Pond DG-09

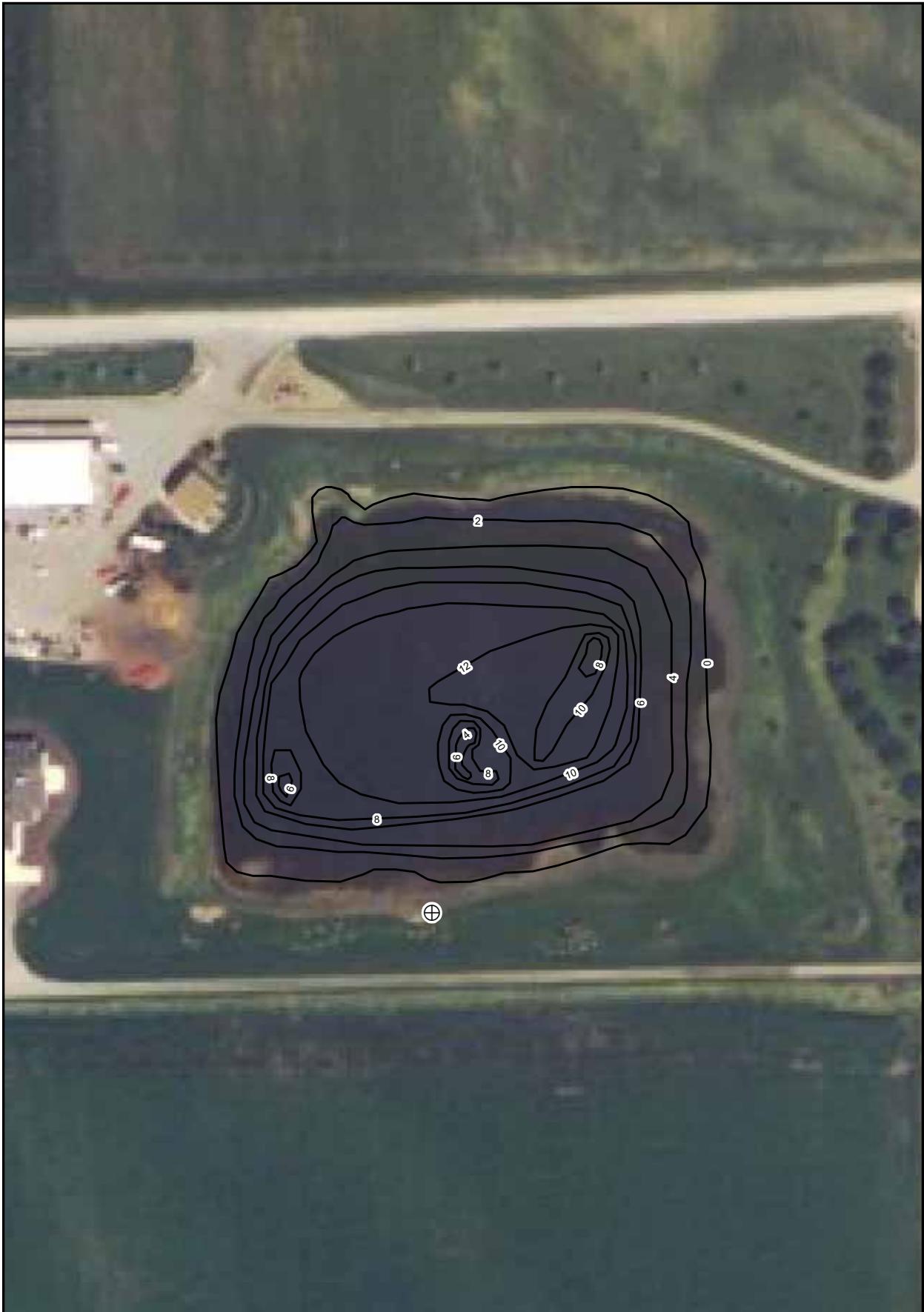
Figure 3 Surface Area for Pond DG-09

Figure 4 Storage Volume for Pond DG-09

DG-09-2 POND DG-09 PHOTOGRAPHS

DG-09-3 POND WATER LEVEL READING DATA SHEETS

DG-09-1
FIGURES



Pond DG-09

LEGEND

- ⊕ Permanent Benchmark
- x— Depth Contour Line (feet)

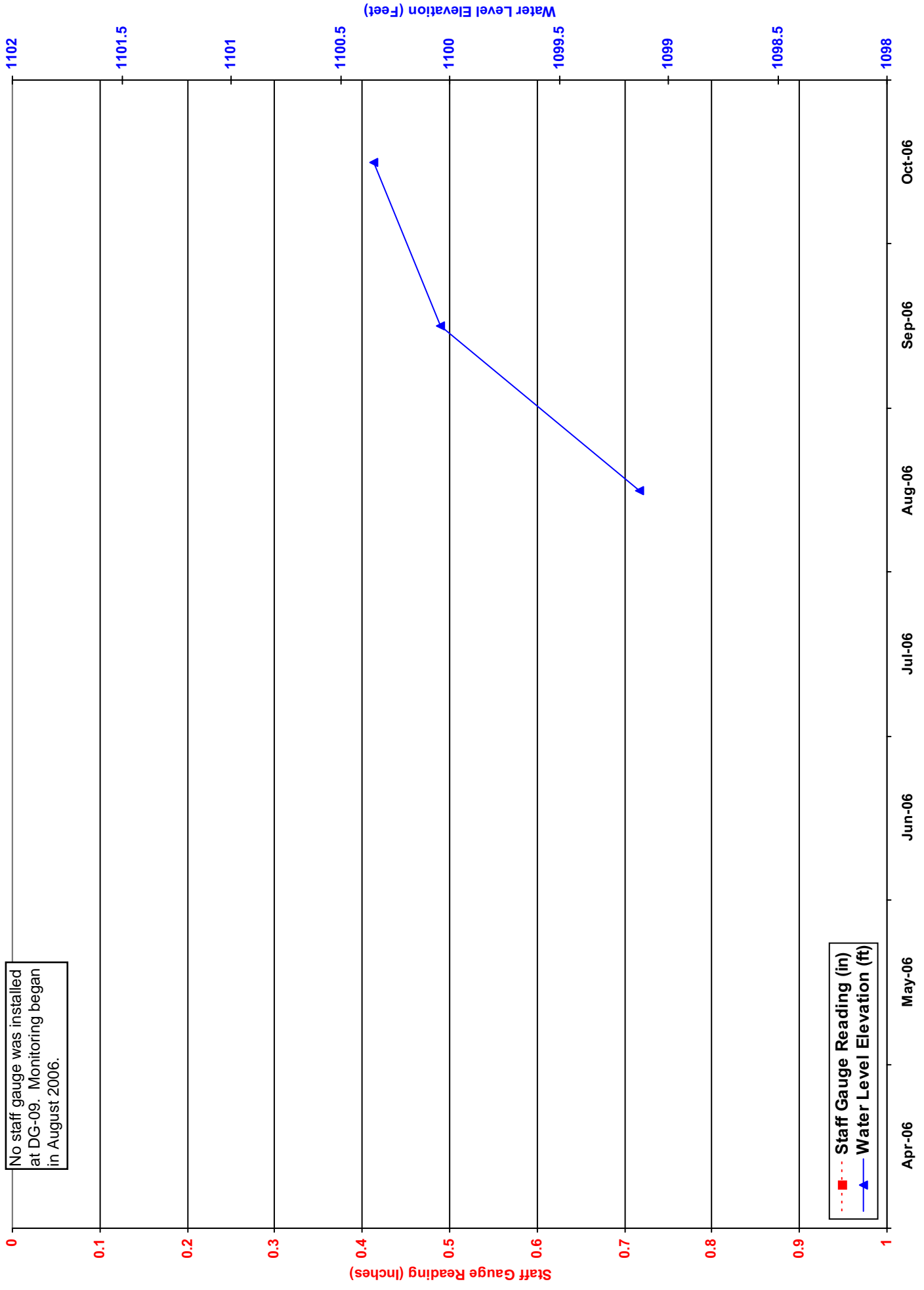


1 inch equals 75 feet



Figure 1
Bathymetric Contours and
Locations of the Staff Gauge
and Permanent Benchmark
at Pond DG-09
Douglas County, NE
Metropolitan Utilities District

Figure 2 2006 Water Level Elevations for PondDG-09



No staff gauge was installed at DG-09. Monitoring began in August 2006.

.....■ Staff Gauge Reading (in)
———▲ Water Level Elevation (ft)

Figure 3 Surface Area for Pond DG-09

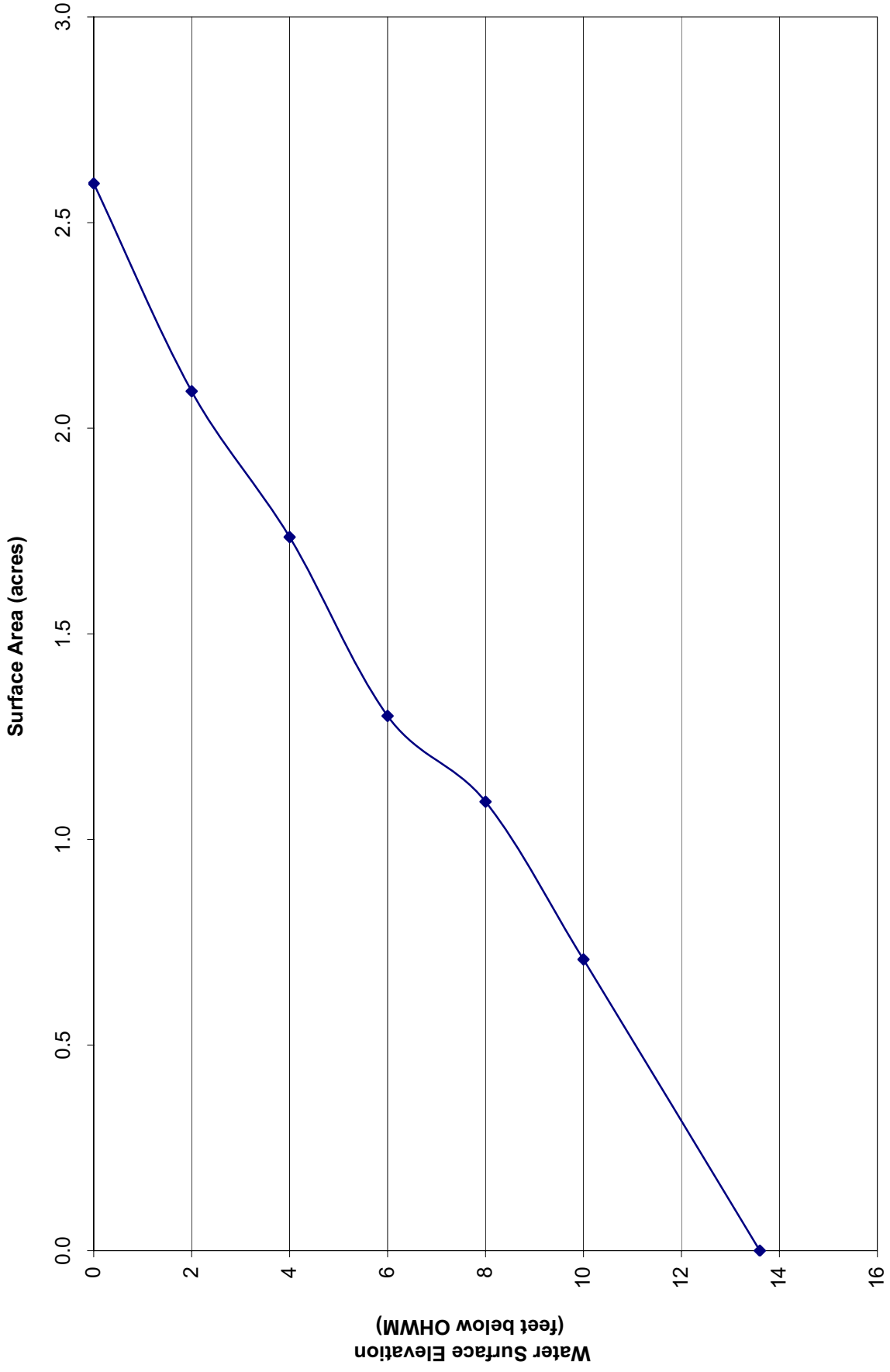
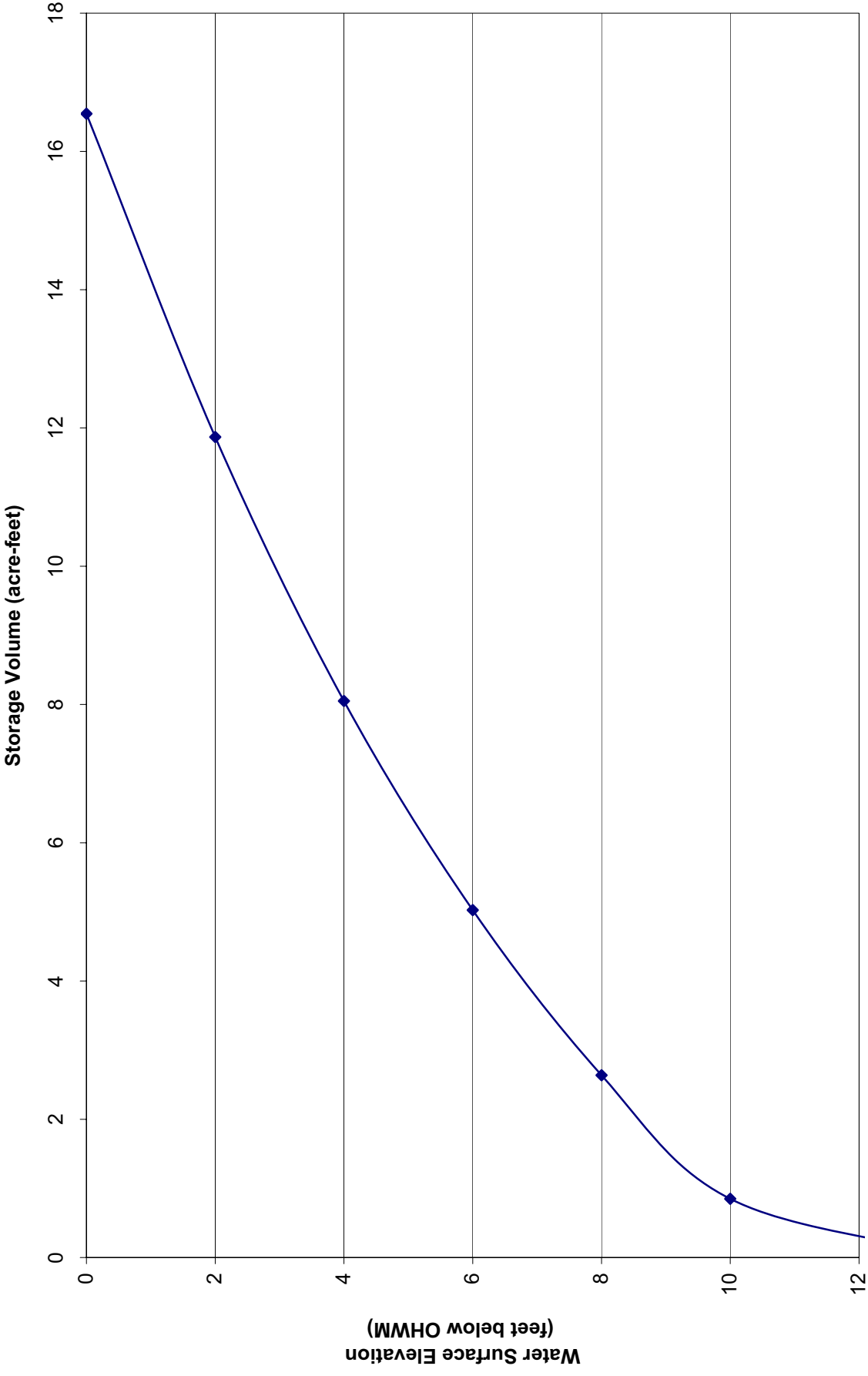


Figure 4 Storage Volume for Pond DG-09



DG-09-2

POND DG-09 PHOTOGRAPHS



Photograph 1: View of DG-09 looking west, August 15, 2006.



Photograph 2: View of DG-09 looking north, August 15, 2006.



Photograph 3: View of DG-09 looking east, August 15, 2006.



Photograph 4: View of DG-09 looking west, September 19, 2006.



Photograph 5: View of DG-09 looking north, September 19, 2006.



Photograph 6: View of DG-09 looking east, September 19, 2006.



Photograph 7: View of DG-09 looking west, October 17, 2006.



Photograph 8: View of DG-09 looking north, October 17, 2006.



Photograph 9: View of DG-09 looking east, October 17, 2006.

DG-09-3

POND WATER LEVEL READING DATA SHEETS



Pond Water Level Reading Data Sheets

Pond #: DG-09

Permanent Benchmark Elevation (feet) 1,102.90

<u>Date</u>	<u>Staff Gauge Reading (inches)</u>	<u>Water Level Elevation (feet)</u>
8/14/2006		1,099.13
9/19/2006		1,100.04
10/17/2006		1,100.35